



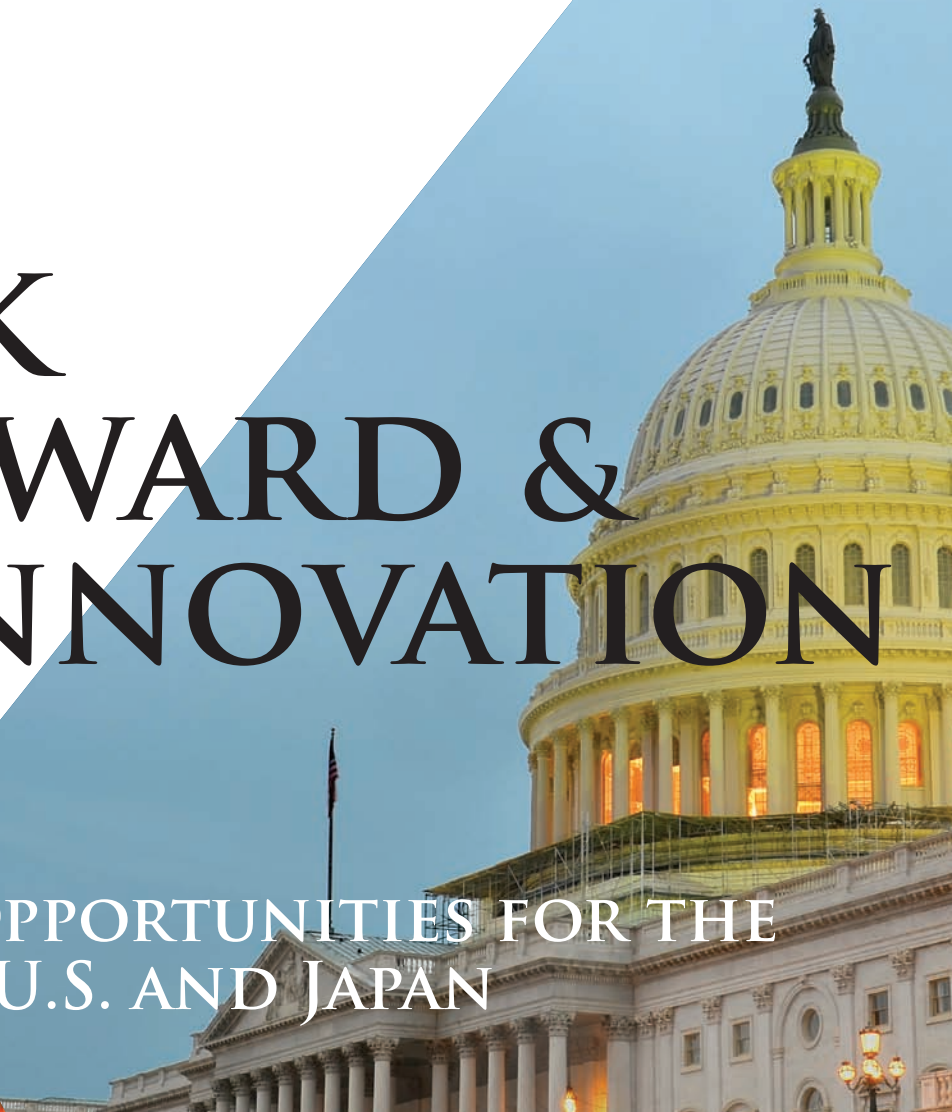
U.S.-JAPAN COUNCIL

ANNUAL CONFERENCE 2013

WASHINGTON, DC
OCTOBER 3-4

RISK REWARD & INNOVATION

OPPORTUNITIES FOR THE
U.S. AND JAPAN



PRUDENTIAL IS A PROUD SPONSOR OF THE U.S.-JAPAN COUNCIL.

We share your commitment to collaboration
and innovation in promoting and strengthening
U.S.-Japan relations.

BEST WISHES FOR CONTINUED SUCCESS.



Prudential
Bring Your Challenges®





Table of Contents

Welcome	3
Letter from Foreign Minister Kishida	4
Letter from Ambassador Sasae	5
About the U.S.-Japan Council	6
Annual Conference Agenda	8
Panel Descriptions	10
Keynote Speaker Biographies	12
Speaker & Panelist Biographies	14
About the TOMODACHI Initiative	31
About the Emerging Leaders Program	32
Annual Conference Sponsors	34
Our Board of Directors and Board of Councilors	36
Special Thanks	38
In Remembrance	39

HITACHI
Inspire the Next

SOCIAL INNOVATION

Creating tomorrow and shaping the future

At Hitachi, we think outside the box to address energy, transportation, water and other sustainability problems facing the world. By applying IT-controlled infrastructure systems, we seek to provide solutions to emerging issues that affect everyday life. That's what Hitachi Social Innovation is all about.

social-innovation.hitachi.com

SOCIAL INNOVATION
**IT'S OUR
FUTURE**



Hitachi is proud to support the U.S. - Japan Council.

STRENGTHENING THE BONDS OF COOPERATION AND FRIENDSHIP

Resiliency is a product of innovation and partnership. Over the years, the U.S.-Japan Council has forged vital links between our two nations. Building a brighter future through collaboration. From energy to global security, Lockheed Martin is proud to deliver innovations driven by a strategic view of future challenges.

As a sponsor of the U.S.-Japan Council, we're pleased to help take this partnership to new heights.

www.lockheedmartin.com

LOCKHEED MARTIN
We never forget who we're working for®





Welcome

We are pleased to welcome you to the 2013 U.S.-Japan Council (USJC) Annual Conference, "Risk, Reward and Innovation: Opportunities for the United States and Japan." We invite you to learn from those that have taken innovative courses of action to enhance the relationship between our two countries. We will explore the significance of synergies among the business, government and civil society sectors, as well as the vital need to cultivate and support leaders in order to develop results-oriented collaborations and partnerships.

The U.S.-Japan Council's Annual Conference provides a unique opportunity to bring together diverse leaders from the United States and Japan. The outstanding keynote speakers and panelists will provide a foundation for a rich dialogue. We are most appreciative of their willingness to join us and generously contribute their time and expertise.

During the Annual Conference we will also highlight the expansion of our TOMODACHI Initiative. Thanks to the generous support of many contributors, the TOMODACHI Initiative is investing in our next generation of leaders through a broad range of programs. By the end of 2013, we will have hosted over 70 programs in the past two years. The TOMODACHI Generation has expanded beyond Tohoku, and we now have alumni programs to encourage participants to maintain a long-term engagement.

We would like to express our sincere gratitude to our Board of Directors and Board of Councilors for their ongoing support and guidance. We appreciate the many sponsors who generously contributed to this year's Annual Conference. Our Conference sponsors, Corporate Members and Council Members provide the support required to continue our work building strong people-to-people relationships between the United States and Japan. Finally, the Annual Conference would not be possible without the dedicated USJC staff who worked tirelessly to bring together this year's Conference and USJC programs throughout the year.

We extend congratulations to Japan for its successful bid to host the 2020 Olympics. As Japan prepares for this exciting international event, there will be many opportunities to strengthen the relationship between the United States and Japan. We thank you for your participation in the Conference, and look forward to your continued participation and support of the U.S.-Japan Council in our commitment to strengthen U.S.-Japan relations.

Sincerely,



Irene Hirano Inouye
President



Thomas Iino
Chairman



Letter from Fumio Kishida, Minister for Foreign Affairs of Japan

Today, I would like to express my sincere congratulations on the convening of the U.S.-Japan Council's 2013 Annual Conference.

The Japan-U.S. alliance is the linchpin of our country's diplomacy and the cornerstone for peace and stability in the Asia-Pacific region. Amidst substantial change in the regional strategic environment, the importance of the Japan-U.S. alliance is ever-increasing. In order to reinforce the bilateral relationship further, it is essential to deepen this bond on various levels. This May, I made the first visit to Los Angeles in 19 years as a Japanese Foreign Minister and enjoyed friendly conversation with Japanese-American leaders who have made remarkable contributions to strengthening relations between our two countries. I was reminded that we must work tirelessly to maintain and enhance the Japan-U.S. relationship, and I especially recognized the importance of developing the next generation of leaders. In this regard, the U.S.-Japan Council's efforts to build networks between Japanese and Japanese-Americans while fostering future generations of young talent are invaluable in their meaningful contributions to bolstering the Japan-U.S. alliance. In particular, the "Tomodachi Initiative," advanced by the U.S.-Japan Council with the U.S. Embassy in Tokyo in the wake of the Great East Japan Earthquake, has played an essential role in developing human resources and reinforcing youth exchanges between disaster-affected areas in Japan and the U.S.

There are none who can doubt the achievements of the late Senator Daniel Inouye, who dedicated his life to serving as the bridge between Japan and the U.S. Senator Inouye's great contributions toward the development of Japan-U.S. relations are irreplaceable, and we all must carry on his legacy. Senator Inouye especially emphasized the development of young people. His sentiment resonates with the aims of the Ministry of Foreign Affairs, and in the remarks I delivered at the U.S.-Japan Council's Japan Symposium in May, I announced that under the Ministry's "KAKEHASHI Project" youth exchange program, we would collaborate with the "Tomodachi Initiative" administered by the U.S.-Japan Council in planning mutual exchanges of youths between Japan and the U.S. I am happy to announce that we plan to exchange approximately 200 people under this framework in the near future. I expect that through this program, there will be greater promotion of youth exchanges from both countries, which will in turn contribute to the further strengthening of the Japan-U.S. alliance.

Finally, I sincerely wish for the success of today's conference. I strongly hope that your frank discussions will not only help develop the relationship between our two countries, but also create momentum for finding solutions to various regional and global issues.

October 2013

Minister for Foreign Affairs of Japan, H.E. Mr. Fumio Kishida



Letter from Kenichiro Sasae,
Ambassador Extraordinary and Plenipotentiary of Japan
to the United States of America



*Ambassador of Japan
Washington, D. C.*

September 23, 2013

Dear Friends,

I would like to offer my warmest welcome to all the participants and supporters of the U.S.-Japan Council's annual conference. We appreciate the time, effort, and support each of you have provided to growing the Japan-U.S. partnership. Each of you helps to form the foundation of our close ties and friendship.

The theme for this year's conference, "*Risk, Reward and Innovation: Opportunities for the U.S. and Japan*", is very apt. The Embassy and the Government of Japan continually look forward to new opportunities to strengthen our bilateral relationship. One of these opportunities is the "*KAKEHASHI Project – The Bridge for Tomorrow*", a collaboration between the Government of Japan and the U.S.-Japan Council in memory of Senator Inouye. Under this project, 100 American students are invited to Japan, and an equal number of Japanese students will come to the U.S. to learn and experience the rich cultures of each country. This is a fitting tribute to Senator Inouye as he often promoted and thought of ways to nurture the next generation of leaders.

The friendship between our countries is already very strong, and we welcome new ideas and innovations to deepen our bond. The U.S.-Japan Council has continually been at the forefront of this outreach and we look forward to the exciting times that await us.

Thank you again for your support. I wish you all a successful conference.

Sincerely,

Kenichiro Sasae
Ambassador of Japan



About the U.S.-Japan Council

OUR MISSION

Strong U.S.-Japan relations are in our global, national and community interest. The U.S.-Japan Council promotes people-to-people relationships as crucial to the U.S.-Japan relationship. We bring together, inspire and engage Japanese Americans of all generations to work with all Americans, Nikkei and Japanese to strengthen U.S.-Japan relations.

OUR VISION

A vibrant Asia Pacific region through engaged and interconnected communities committed to the U.S.-Japan relationship.

OVERVIEW

The U.S.-Japan Council is a 501(c) 3 non-profit educational organization that contributes to strengthening U.S.-Japan relations by bringing together diverse leadership, engaging stakeholders and exploring issues that benefit communities, businesses and government entities on both sides of the Pacific. The Council promotes people-to-people relations as crucial to a strong U.S.-Japan relationship.

Recognizing the catalytic role that Japanese Americans play in strengthening U.S.-Japan relations, the Council cultivates a national network of Japanese American leaders known as Council Members. The U.S.-Japan Council collaborates with other organizations and institutions to develop programs that allow Council Members to engage with their Japanese counterparts and leaders in the United States.

The Council was founded in 2009 and is headquartered in Washington, DC with a regional office in Los Angeles, CA. In 2012, the U.S.-Japan Council (Japan) was created to support the administration of the TOMODACHI Initiative. The U.S.-Japan Council (Japan) maintains an office in Tokyo, Japan.

WHY U.S.-JAPAN?

The U.S.-Japan relationship continues to demonstrate its relevance and fundamental role in the Asia-Pacific region. The partnership between the U.S. and Japan is a driving force behind economic growth, while the security alliance maintains peace and stability in the region. Built on shared values such as innovation and resiliency, the contemporary U.S.-Japan relationship continues to evolve and develop new frontiers for collaboration.

WHY JAPANESE AMERICANS?

Japanese Americans have a distinct connection to Japan, emanating from a shared heritage, upbringing and history. Recognizing this special tie, the U.S.-Japan Council encourages Japanese Americans to engage in local, regional and national activities that contribute to U.S.-Japan relations. Japanese Americans are uniquely positioned to impact government policy, business decisions and civil society activities by providing expertise and recommendations to counterparts in Japan and engaging with U.S. leaders in America. U.S.-Japan Council programming not only brings together distinguished Japanese American professionals, but also engages the next generation of Japanese American leaders to ensure an even brighter future.





LifeWear

You feel it instantly.

So comfortable, so right, so *you*—

Clothes that are who you are

And where you are going.

LifeWear. Clothes for a better life
for everyone, every day.



Annual Conference Agenda - Friday, October 4th 2013

8:30AM-10:00AM OPENING PLENARY SESSION – PRESIDENTIAL BALLROOM

Emcee	Mr. Frank Buckley, <i>News Anchor, KTLA-TV Los Angeles</i>
Welcoming Remarks	Mr. Thomas Iino, <i>Chairman, U.S.-Japan Council</i>
Keynote Address	Mr. John R. Strangfeld, <i>Chairman & CEO, Prudential Financial, Inc.</i>
Keynote Address	Mr. Hiroaki Nakanishi, <i>President, Hitachi, Ltd.</i>
Keynote Address	Hon. William Burns, <i>Deputy Secretary, U.S. Department of State</i>
Special Remarks	Mr. Hideaki Mizukoshi, <i>Minister and Head of Chancery, Embassy of Japan in the United States of America</i>
Conference Overview	Ms. Irene Hirano Inouye, <i>President, U.S.-Japan Council</i>

10:45AM-12:15PM TOPIC ENGAGEMENT SESSION ONE

This Town: Japan's Presence and Influence in DC – CONGRESSIONAL ROOM

Moderator	Dr. Kent Calder, <i>Director, Reischauer Center for East Asian Studies, Johns Hopkins University School of Advanced International Studies</i>
	Mr. Marc Knapper, <i>Director, Office of Japanese Affairs, U.S. Department of State</i>
	Mr. Hideaki Mizukoshi, <i>Minister and Head of Chancery, Embassy of Japan in the United States of America</i>
	Dr. Mike M. Mochizuki, <i>Associate Dean for Academic Programs, Elliott School of International Affairs, The George Washington University</i>
	Mr. Tsunehiko Yanagihara, <i>Senior Vice President and General Manager, Washington Office, Mitsubishi Corporation (Americas)</i>

Global Citizenship and Preparing Our Youth for Tomorrow – SENATE ROOM

Moderator	Ms. Yumi M. Kuwana, <i>Founding Principal, Cook Pine Capital LLC</i>
	Dr. Linda A. Hill, <i>Wallace Brett Donham Professor of Business Administration, Harvard Business School</i>
	Mr. Lee Howell, <i>Managing Director, Member of the Managing Board, World Economic Forum</i>
	Dr. David Leheny, <i>Henry Wendt III '55 Professor of East Asian Studies, Princeton University</i>
	Dr. Yutaka Tsujinaka, <i>Executive Advisor to the President, University of Tsukuba</i>

Japan's Civil Sector in Perspective – FEDERAL ROOM A

Moderator	Ms. Mari Kuraishi, <i>Co-founder & President, GlobalGiving</i>
	Dr. Ramona Bajema, <i>Country Representative, Japan, AmeriCares</i>
	Mr. Eiichi Sadamatsu, <i>Former Trustee, JANIC & Deputy Secretary-General, Save the Children Japan</i>
	Mr. Noriyuki Shiina, <i>Secretary General, Japan Platform</i>
	Dr. Steven Rathgeb Smith, <i>Executive Director, American Political Science Association</i>

Corporate Executive Leadership & Mentoring – FEDERAL ROOM B

Moderator	Ms. Joy Sakurai, <i>First Secretary, U.S. Embassy in Tokyo, U.S. Department of State</i>
	Ms. Phyllis Campbell, <i>Chair, JPMorgan Chase & Co., Pacific Northwest</i>
	Ms. Royanne K. Doi, <i>Corporate Chief Ethics Officer, Prudential Financial Inc. - Japan Representative Office</i>
	Ms. Tracey Doi, <i>Group Vice President & Chief Financial Officer, Toyota Motor Sales, USA, Inc.</i>
	Ms. Yuko Kaifu, <i>Senior Vice President, Corporate Communications, Union Bank, USA</i>

The Changing Face of Communications: The Digital Revolution – PAN AMERICAN ROOM

Moderator	Mr. Kelly Ogilvie, <i>Founder, Chairman, President and Chief Operating Officer, Quemulus, Inc.</i>
	Ms. Amanda Brown, <i>National Political Director, Rock the Vote</i>
	Ms. Nicole Forrester, <i>Director – Young Leaders Program, Pacific Forum CSIS</i>
	Mr. Nicholas Namba, <i>Deputy Coordinator for Content Development and Partnerships, U.S. Department of State</i>

12:30PM-2:00PM LUNCHEON PLENARY SESSION – PRESIDENTIAL BALLROOM

Special Remarks	Mr. Michael Wascom, <i>Managing Director, International & Government Affairs, American Airlines</i>
Keynote Address	Dr. Shinya Yamanaka, <i>2012 Nobel Prize in Physiology or Medicine & Director, Center for iPS Cell Research and Application (CiRA), Kyoto University</i>
Introduction	Hon. John V. Roos, <i>Former Ambassador of the United States to Japan</i>
TOMODACHI Update	Ms. Laura Abbot, <i>Executive Director, TOMODACHI Initiative, U.S.-Japan Council</i>



2:15PM-3:45PM TOPIC ENGAGEMENT SESSION TWO

U.S.-Japan Bilateral Relations: New Opportunities – CONGRESSIONAL ROOM

Moderator Dr. Michael R. Auslin, *Resident Scholar in Asian and Security Studies, American Enterprise Institute for Public Policy Research*
 Mr. James W. Fatheree, *President & Chief Operating Officer, U.S.-Japan Business Council & Senior Director, Japan and Korea, U.S. Chamber of Commerce*
 Dr. Robert F. Smith, *Vice President, Space and Cyber, Lockheed Martin Information Systems & Global Solutions (IS&GS) - Defense*
 Mr. Masaaki Tanaka, *Deputy President, Mitsubishi UFJ Financial Group, Inc.*

The TOMODACHI Initiative: Developing the Next Generation – SENATE ROOM

Moderator Ms. Kaoru Utada, *Program Manager, TOMODACHI Initiative, U.S.-Japan Council (Japan)*
 Ms. Atsuko Arimoto, *Student Scholar, BEYOND Tomorrow*
 Ms. Mayo Hotta, *Recovery Initiatives Group, CEO Office, SoftBank Corp.*
 Ms. Akiko Kato, *TOMODACHI NGO Leadership Program*
 Mr. Delmar Tarrago, *TOMODACHI U.S.-Japan Youth Exchange Program*
 Ms. Ke ndee Yamaguchi, *TOMODACHI Mitsui & Co. Leadership Program & USJC Emerging Leaders Program*

Art and Imagination of the Short-Term Visit – FEDERAL ROOM A

Moderator Dr. Curtiss Takada Rooks, *Associate Dean of Bellarmine College of Liberal Arts, Loyola Marymount University*
 Mr. Paul Niwa, *Associate Professor, Emerson College*
 Dr. George J. Sanchez, *Vice Dean for Diversity and Strategic Initiatives, Dornsife College of Letters, Arts & Sciences, University of Southern California*
 Ms. Ayumi Takita, *Program Director, Intellectual Exchange, Japan Foundation Center for Global Partnership, New York*

Ventures and Collaboration in the Clean Energy & Technology (R)evolution – FEDERAL ROOM B

Moderator Ms. Kei Ashizawa, *Associate, Steptoe & Johnson PLLC*
 Ms. Kay Fukunaga, *Director of Hawaii State Affairs, NextEra Energy Hawaii*
 Dr. Gerald Hane, *President & Chief Executive Officer, Battelle-Japan*
 Mr. Jeffrey A. Miller, *Director, U.S. Department of Energy Japan Office, U.S. Embassy Tokyo, U.S. Department of Energy*
 Ms. Ginger Vaughn, *Television Journalist, CCTV*

Culinary Diplomacy: Connecting People of Different Nations – PAN AMERICAN ROOM

Moderator Mr. Stephen Kagawa, *Chief Executive Officer, The Pacific Bridge Companies*
 Mr. Craig Takiguchi, *Former President, CEO and Co-founder, Muginoho International, Inc., parent company of Beard Papa's Sweets Café*
 Mr. Kenshiro Uki, *General Manager, Sun Noodle New Jersey LLC*
 Chef Roy Yamaguchi, *Chef & Founder, Roy's*
 Chef Eric Ziebold, *Chef & Restaurateur, CityZen*

4:00PM-5:00PM CLOSING PLENARY SESSION – PRESIDENTIAL BALLROOM

Models of Excellence: Lessons from Japanese American Stars

Emcee Ms. Jan Yanehiro, *Department Chair, School of MultiMedia Communications, Academy of Art University, San Francisco*
 Mr. Ryu Goto, *International Concert Violinist*
 Vice Admiral Harry B. Harris, Jr., *Assistant to the Chairman of the Joint Chiefs of Staff, United States Navy*
 Mr. Darren T. Kimura, *Managing Director, Enerdigm Group, Inc.*
 Mr. Daniel M. Tani, *Vice President, Orbital Sciences Corporation & Former Astronaut*
 Ms. Kr isti Yamaguchi, *Founder, Always Dream Foundation & Olympic Champion Figure Skater*

5:30PM-7:00PM CLOSING RECEPTION AND NETWORKING – CONGRESSIONAL ROOM



Panel Descriptions

Morning Panel Discussions

This Town: Japan's Presence and Influence in DC

As U.S.-Japan relations become more important than ever in the constantly changing landscape of international politics, the role and value of Japanese interests groups in America cannot be overlooked. However, the essential question then becomes: In the bustling political hub of the United States that is Washington DC, how do Japanese individuals and organizations ensure Japan's interests are advanced? What is necessary to keep up with the dynamic, evolving political game in the Beltway? This session allows the audience to engage in a discussion that addresses these questions. The panel includes perspectives on Japan's presence from the business, diplomatic, academic and legislative spheres to provide insights and lessons from inside and outside these political and policy circles, to evaluate how Japan's current activities compare to past efforts and those of other countries and to offer proposals on new ways for Japan to navigate DC to the greatest effect.

Global Citizenship and Preparing our Youth for Tomorrow

What does it mean to become a Global Citizen? What tools do we need to navigate this complex and shrinking world? We need to think about Global Education and provide our next generation with the appropriate tools and knowledge to lead: a global mindset, language skills, cultural sensitivity, moral character and leadership skills. Preparing our youth for this increasingly globalized, digitalized and more complex world requires certain skills and tools in order to thrive in this 21st century world. We will discuss these issues, how the U.S. and Japanese education systems are evolving in this globalized context and how the U.S.-Japan Council can support our next generation's education.

Japan's Civil Sector in Perspective

Japan's civil sector played an indispensable role in mobilizing a response to the 2011 Tohoku disaster. Civil society insiders hoped that as the Kobe earthquake jumpstarted volunteerism in Japan, the Tohoku disaster might trigger a professionalization and stronger fundraising capacity among NGOs in Japan. Two years later, where does the Japanese civil sector stand? Does Japan have the civil sector it needs? How does it compare to and what might it leverage from civil society in other nations? What are its particular challenges and opportunities? Considering these questions, this session will examine the historical and contemporary contexts and provide a comparative analysis.

Corporate Executive Leadership & Mentoring

This session explores mentoring in the corporate environment through a conversation among four successful executives from top U.S. and Japanese companies operating in both countries. The speakers have proven very successful in traditional companies and sectors, bringing diversity to their workplaces. They will discuss their experiences along the way, including the role of mentoring throughout their careers and in their current positions. They will also share their views on being a mentor to the next generation of diverse corporate leaders and discuss the leadership skills that were most instrumental in getting them to the corporate executive level. The moderator will engage the audience to broaden the discussion and identify useful tips for successful mentoring and leadership in the corporate workforce.

The Changing Face of Communications: The Digital Revolution

One out of every seven minutes online is spent on Facebook, according to Mediabistro. Since Twitter's launch, 170 billion tweets have moved markets and inspired revolutions. The world of communications is rapidly changing. The internet, social media, mobile computing and web technologies have dramatically changed how people interact, communicate and share information. This panel brings together expertise from the private, public and non-profit sectors to assess the impact of these trends, discuss the generational implications of new media and explore opportunities to reach the next generation of stakeholders in the U.S.-Japan relationship.



Afternoon Panel Discussions

U.S.-Japan Bilateral Relations: New Opportunities

This past year has seen a number of positive developments that have created a growing optimism and excitement about the U.S.-Japan relationship. This session will look at how political, strategic, economic, trade and technology developments have created new opportunities in the relationship. The panelists are policy experts and business leaders who will offer insights into potential areas of growth and the steps needed to reach that potential to benefit both sides of the Pacific. Looking at financial markets, trade relations, security partnerships and technology cooperation in areas such as cyber security, the session will explore avenues for closer cooperation between the two countries.

The TOMODACHI Initiative: Developing the Next Generation

Then Secretary of State Hillary Clinton introduced the importance of the TOMODACHI Initiative at the U.S.-Japan Council Annual Conference in 2011 with these famous words: “Together, we want to create a TOMODACHI Generation that is deeply committed to the future of our relationship.” Born out of support for Japan’s recovery from the Great East Japan Earthquake, the TOMODACHI Initiative invests in the next generation of Japanese and American leaders through educational and cultural exchanges as well as entrepreneurship and leadership programs. This panel will feature five individuals who have participated in various TOMODACHI programs and will represent the student, corporate social responsibility, nonprofit sector and young professional perspectives as they relate to leadership and the future of U.S.-Japan relations. Come meet these amazing individuals to find out what being a part of the TOMODACHI Generation means to them.

Art and Imagination of the Short-Term Visit

This session will explore innovative and imaginative approaches to engaging American students through short-term visit programs to Japan emphasizing academic and professional disciplines. The presenters will highlight successful programs, providing insights about their programs from idea to implementation. We will look at how organizations outside the university are able to assist educators through grants or other support. Following the presentations and Q&A, the audience will be asked to join us in brainstorming innovative ideas beyond traditional approaches for expanding the use of education to strengthen U.S.-Japan relations.

Ventures and Collaboration in the Clean Energy & Technology (R)evolution

Given the rapidly evolving policy and market context for clean energy and clean technologies, what are today’s (and tomorrow’s) opportunities for strengthening U.S.-Japan bilateral relations, as well as economic and energy interdependence? This session directly supports the Conference theme of “Risk, Reward and Innovation” through presentation and discussion of progress to date and emerging focus areas at the convergence of energy policy, clean technology entrepreneurship, and leadership. The session will invite attendees to engage in exploring new opportunities in Clean Energy/Clean Tech, and will feature panelist perspectives as well as an interactive roundtable discussion.

Culinary Diplomacy: Connecting People of Different Nations

All over the world, people feel connected to their native cuisines, which hold deep social and cultural significance. Food can also serve as a common starting point for people to share tastes and ideas and as the stimulus for further communication. This session takes a look at how sharing food across borders can serve to promote cross-cultural dialogue and understanding and create platforms for lasting personal relationships. Our panel of restaurateurs and food ambassadors will delve into the people-to-people connections they have created throughout the culinary industry in both the United States and Japan. They will share stories about their successes and challenges building bridges between the Japanese and American people using food as the catalyst.



Keynote Speakers

William Burns,

Deputy Secretary of State, U.S. Department of State



William Burns holds the highest rank in the Foreign Service, Career Ambassador, and became Deputy Secretary of State in July 2011. He is only the second serving career diplomat in history to become Deputy Secretary. Ambassador Burns served from 2008 until 2011 as Under Secretary for Political Affairs. He was Ambassador to Russia from 2005 until 2008, Assistant Secretary of State for Near Eastern Affairs from 2001 until 2005 and Ambassador to Jordan from 1998 until 2001. Ambassador Burns has also served in a number of other posts since entering the Foreign Service in 1982. Ambassador Burns earned a B.A. in History from LaSalle University and M.Phil. and D.Phil. degrees in International Relations from Oxford University, where he studied as a Marshall Scholar. He speaks Russian, Arabic and French, and is the recipient of two Presidential Distinguished Service Awards and a number of Department of State awards.

Hiroaki Nakanishi,

President, Hitachi, Ltd.



Hiroaki Nakanishi is the President of Hitachi, Ltd. He was appointed to the position in 2010, the year when Hitachi marked the 100th anniversary of its founding. Hitachi continues to pursue growth in the global market, focusing on social innovation business that is aimed at creating smart social infrastructures based on control and information technologies. Mr. Nakanishi started his career with the company in April 1970 as an engineer in computer system design at Omika Works in Hitachi City, the hometown of Hitachi Group. He has held numerous senior positions, mostly in the field of information and control systems. He has rich experience in Europe and North America, where he conducted Hitachi's global business. Before his presidency, he spent five years in California to turn around a hard disk drive company, Hitachi Global Storage Technologies, Inc., as Chairman and CEO. He attended Tokyo University and earned a B.S. in Electrical Engineering. He also earned a M.S. in Computer Engineering at Stanford University.

John R. Strangfeld,

Chairman & CEO, Prudential Financial, Inc.



John Strangfeld is Chairman and CEO of Prudential Financial, Inc., a financial services leader with operations in the United States, Asia, Europe, and Latin America. Before being named Chairman and CEO in 2008, Mr. Strangfeld was Vice Chairman responsible for Prudential's U.S. Businesses. Previously, he held a variety of senior investment positions at Prudential, both within the U.S. and abroad. Mr. Strangfeld received a B.S. in Business Administration from Susquehanna University, where he serves as Chairman of the Board of Trustees, and an MBA from the Darden School of Business at the University of Virginia, where he serves on Darden's Foundation Board of Trustees. He is a member of the Raven Society, UVA's oldest honorary society. In 2005, Mr. Strangfeld initiated an MBA program at Darden for military officers seeking to transition into leadership roles in civilian life. Mr. Strangfeld is a member of the Financial Services Forum, the Geneva Association, and the American Council of Life Insurers. He is also Co-Chair of the Board of Directors of the New Jersey Performing Arts Center.

Shinya Yamanaka, Ph.D.,

2012 Nobel Prize in Physiology or Medicine &

Director, Center for iPS Cell Research and Application (CiRA), Kyoto University



Shinya Yamanaka received his M.D. from Kobe University and a Ph.D. from Osaka City University Graduate School. After working as a postdoctoral fellow at the Gladstone Institute of Cardiovascular Disease in San Francisco, he became an assistant professor at Osaka City University in 1996. After taking up an associate professorship in 1999 and a professorship in 2003 at the Nara Institute of Science and Technology, he moved to Kyoto University in 2004. Since 2008, Yamanaka serves as the director of the Center for iPS Cell Research and Application (CiRA) at Kyoto University. He has received awards including the Albert Lasker Basic Medical Research Award, the Imperial Prize and Japan Academy Prize, the Kyoto Prize, the Wolf Prize, and the Nobel Prize in Physiology or Medicine. He also serves as a senior investigator at Gladstone and is a foreign associate of the U.S. National Academy of Sciences.



Hiromitsu and Betty Ogawa are proud supporters
of the 2013 U.S.-Japan Council Annual Conference



Global Intelligence

Creating international business
for a growing family of nations

Our businesses are active across a range of industries:

Aerospace • Chemicals • Energy • Foods • Information & Communications
Technology • Life Sciences • Logistics • Machinery • Metals • Textiles

We are proud to support the U.S.-Japan Council

www.mitsubishicorp.com



Speakers and Panelists

Laura Abbot,

Executive Director, TOMODACHI Initiative, U.S.-Japan Council



Laura Winthrop Abbot is the Executive Director of the TOMODACHI Initiative. Based in Tokyo, Ms. Abbot works closely with U.S. Embassy and U.S.-Japan Council staff members. She joined the U.S.-Japan Council in December 2011, following eight months as a Council on Foreign Relations-Hitachi Fellow at the U.S. Embassy in Tokyo. From 2009-2011, she was a Professional Staff Member of the U.S. Senate Committee on Foreign Relations, working on issues related to international development and foreign assistance. Prior to that, she spent five years at the international business risk consultancy, Control Risks, where, as Vice President based in London and New York, she managed political risk and crisis management projects across five continents. From 2000-2002, Ms. Abbot was Special Assistant to the President of the Council on Foreign Relations. She holds an M.Phil in International Relations from Cambridge University and a B.A. from Harvard University.

Atsuko Arimoto,

Student Scholar, BEYOND Tomorrow



Atsuko Arimoto is a high school student at St. Timothy's School in Maryland. She was born in Okuma town in Fukushima and had to evacuate to a temporary housing complex in Iwaki City as her house was 3km away from the Fukushima Dai-ichi Nuclear Power Plant. Touched by the multitude of people from across the world who aided Japan, Ms. Arimoto wants to give back and aspires to work in a field where she can help others who are in greater need than she is. As a first step towards her goals, she moved to the United States to study at St. Timothy's School in Maryland through the BEYOND Tomorrow High School Study Abroad Program in 2012. She has been participating in TOMODACHI programs and events through the years as a TOMODACHI Special Scholar. She hopes to proceed to an American university to become a well-rounded individual with global perspectives.

Kei Ashizawa,

Associate, Steptoe & Johnson PLLC



Kei Ashizawa is an attorney at the law firm Steptoe & Johnson PLLC. She practices in the area of energy and natural resources law with a focus on oil and gas matters. She counsels clients in relation to exploration and production activities through mineral title examination of federal, state, and privately owned lands in Texas, Colorado, and West Virginia. Ms. Ashizawa earned her juris doctorate from the University of Houston Law Center, and her bachelor of arts in Japanese studies at the University of Texas at Austin. In 2011, Ms. Ashizawa was selected as a delegate in the U.S.-Japan Council Emerging Leader Program. Ms. Ashizawa aspires to further her career in the U.S.-Japan energy sector, and international oil and gas transactions. When she is not working, Ms. Ashizawa enjoys volunteering in Houston's Asian American community, coaching and refereeing girls' lacrosse, and traveling.

Michael R. Auslin, Ph.D.,

Resident Scholar in Asian and Security Studies,

American Enterprise Institute for Public Policy Research



Michael Auslin is a columnist for the Wall Street Journal, writing about Asia and global security. He is also a Senior Fellow at the American Enterprise Institute for Public Policy Research in Washington, D.C., where he is concurrently a Resident Scholar in Asian Studies and the Director of Japan Studies. Dr. Auslin was Associate Professor of History at Yale University prior to joining AEI. He received the Nakasone Yasuhiro Award for Excellence in 2010, and has been named a Young Global Leader by the World Economic Forum, a Marshall Memorial Fellow by the German Marshall Fund and an Asia 21 Fellow by the Asia Society. His writing appears in leading publications and he comments regularly for U.S. and foreign broadcast media. He received a B.S. from Georgetown University's School of Foreign Service and his Ph.D. in History from the University of Illinois at Urbana-Champaign.



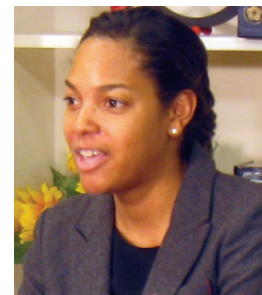
**Ramona Bajema, Ph.D.,
Country Representative, Japan, AmeriCares**

Ramona Bajema is the Country Representative for AmeriCares recovery efforts in northeastern Japan following the Great East Japan Earthquake and tsunami. She has lent her regional expertise as a consultant to think-tanks, research centers, foreign investment banks and the entertainment industry. Dr. Bajema oversees more than 200 grants that fund medical, dental and psychosocial programs in Iwate, Miyagi and Fukushima Prefectures. Before arriving in Japan in June of 2011 to lead the AmeriCares team, she was completing her dissertation at Columbia University for a doctorate of philosophy in Modern Japanese History. In addition to Japanese history, Dr. Bajema has studied Japanese economic and political systems as a graduate student at the Paul H. Nitze School of Advanced International Studies (SAIS) in Washington DC, where she received her Master's in 2004.



**Amanda Brown,
National Political Director, Rock the Vote**

Amanda Brown is the National Political Director at Rock the Vote - a nonpartisan nonprofit with a mission to build political power for young people. Ms. Brown oversees the implementation and development of the online voter registration tool, partnerships, voter registration modernization advocacy efforts as well as the organization's civic engagement programming. Two days after graduating from Dartmouth College in 2007, she joined the Obama campaign, organizing in Nevada, Ohio, Pennsylvania and Oregon, before moving to Chicago for the general election effort. She then joined the Presidential Inaugural Committee in Washington, DC. She soon transitioned into the Obama Administration, serving as the Assistant to the Director in the White House Office of Political Affairs, and then as an Advisor to the Secretary for Strategic Planning at the U.S. Department of Energy. She left the Administration in 2011 to "pay [her experiences] forward." Engaging young people in our country's democracy is her mission, and she loves it.



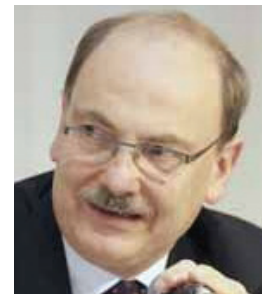
**Frank Buckley,
News Anchor, KTLA-TV Los Angeles**

Frank Buckley anchors KTLA's Emmy Award-winning signature broadcast, LA'S #1 rated KTLA Morning News. Before landing at KTLA, he was a correspondent for CNN. In March 2011, he traveled to Japan to provide coverage of the tsunami and earthquake. Mr. Buckley also covered the Kobe earthquake and has reported from numerous locations across the globe including Iran, London, Hong Kong, Turkey, Mexico, and from warships in the Arabian Sea and the Persian Gulf. Mr. Buckley is the recipient of numerous awards including the Emmy and Golden Mike. He was a member of the CNN team that won the 2002 National Headliner Award for coverage of the 9/11 attacks and their aftermath. He currently serves on the board of the Los Angeles chapter of the Asian American Journalists Association and is a member of the U.S.-Japan Council. He was a member of the 2006 Japanese American Leadership Delegation.



**Kent Calder, Ph.D.,
Director, Reischauer Center for East Asian Studies,
Johns Hopkins University School of Advanced International Studies**

Kent Calder is currently Director of the Reischauer Center for East Asian Studies at SAIS/Johns Hopkins University in Washington, D.C. Before arriving at SAIS in 2003, he taught for twenty years at Princeton University, and also as Visiting Professor at Seoul National University, and Lecturer on Government at Harvard University. Dr. Calder has served as Special Advisor to the U.S. Ambassador to Japan (1997-2001), Japan Chair at the Center for Strategic and International Studies (1989-1993 and 1996); and as the first Executive Director of Harvard University's Program on U.S.-Japan Relations, during 1979-1980. A specialist in East Asian political economy, Dr. Calder has spent eleven years living and researching in Japan, and four years elsewhere in East Asia. He received his Ph.D. from Harvard University in 1979, where he worked under the direction of Edwin O. Reischauer.





**Phyllis Campbell,
Chair, JPMorgan Chase & Co., Pacific Northwest**



Phyllis Campbell is the Chairman, Pacific Northwest for JPMorgan Chase & Co. She is the firm's senior executive in Washington, Oregon, and Idaho across businesses, representing JPMorgan Chase & Co. at the most senior level to clients. She has served as the President/CEO of both The Seattle Foundation and U.S. Bank of Washington. She is a frequently requested speaker on governance, banking and risk-related topics. She has been recognized as the inaugural NACD Director of the Year Award from the Pacific Northwest chapter and received the Woman Who Makes A Difference Award from the International Women's Forum. She was also awarded the Distinguished Alumnus Award from Washington State University. Her board service in the private and not-for-profit sectors includes the U.S.-Japan Council Board of Directors. Ms. Campbell's education includes a B.A. from Washington State University and an M.B.A. from the University of Washington, where she is also a graduate of the Pacific Coast Banking School.

**Royanne K. Doi,
Corporate Chief Ethics Officer, Prudential Financial Inc. –
Japan Representative Office**



Royanne Doi is Corporate Chief Ethics Officer at Prudential Financial, Inc.–Japan Representative office. She has spent more than 17 years in Japan. Previously she was Senior Regional Counsel for Asia Pacific for State Street Bank and Trust Company, covering banking, asset management, foreign exchange and securities and before that, she served as Regional Director, Asia for Legal/Government Affairs for CIGNA Songai/ACE Insurance, handling legal, regulatory, and trade issues with a variety of industry and government officials. She graduated Magna Cum Laude, Phi Beta Kappa from Washington University in St. Louis, Missouri, and received her law degree from UCLA School of Law. She serves on the U.S.-Japan Council Board of Directors.

**Tracey Doi,
Group Vice President & Chief Financial Officer, Toyota Motor Sales, USA, Inc.**



Tracey Doi is Group Vice President and Chief Financial Officer of Toyota Motor Sales, USA, Inc., the marketing, sales, distribution and customer service arm of Toyota, Lexus and Scion in the United States. She is responsible for corporate finance, tax, customs, treasury, accounting, procurement and corporate services, and serves on the company's audit, risk and benefit committees and as an officer and/or director for several subsidiaries. Ms. Doi has been recognized as one of the top 100 Asian Professionals in North America by the National Association of Asian American Professionals and one of the 100 leading women in the automotive industry by Automotive News. She serves on the board of directors for the U.S.- Japan Council, the Japanese American National Museum, the Asian and Pacific Islander Chamber of Commerce and Entrepreneurship (ACE) and Emmaus Life Sciences. Ms. Doi serves as Vice Chair of the Economic Advisory Council for the Federal Reserve and was a delegate of the 2010 Japanese American Leadership Delegation.

**James W. Fatheree,
President & Chief Operating Officer, U.S.-Japan Business Council &
Senior Director, Japan and Korea, U.S. Chamber of Commerce**



James W. Fatheree is President of the U.S.-Japan Business Council (USJBC) and Senior Director for Japan and Korea at the U.S. Chamber of Commerce. Mr. Fatheree works with the board of directors and member companies to set strategic direction and policy priorities for the USJBC and provides substantive and management oversight. He also interacts with senior U.S. and Japanese government officials and corporate executives in pursuing the Council's mission. The USJBC, which was integrated into the Chamber in June 2012, represents the interests of U.S. companies operating in Japan and works to improve bilateral trade and economic relations. In his role as senior director, Fatheree helps set Chamber priorities and policy positions for Japan and Korea as part of the Asia division's overall agenda and programs. Previously, he worked in the International Trade Administration and in several private firms on trade issues. Mr. Fatheree received a B.A. in government from the University of Texas at Austin, an M.A. in international economic policy from American University and a certificate in international business from Georgetown University.



**Nicole Forrester,
Director – Young Leaders Program, Pacific Forum CSIS**

Nicole Forrester is Director of the Young Leaders Program at Pacific Forum CSIS and concurrently holds a WSD-Handa Fellowship for her research into the impact of social media on Next Generation attitudes toward international issues. She has written on Australian foreign policy, Australia-U.S. relations and modernizing the U.S. alliance system in the Asia-Pacific region. In 2011, she was awarded the East-West Center's Asia-Pacific Leadership Fellowship. Previously, Ms. Forrester was the senior international and government relations adviser for the Australian Industry Group. At the Department of Foreign Affairs and Trade in Canberra, she served as Acting Director of the United Nations and Commonwealth Section and as consul for economic and political affairs at the Australian Consulate-General in Los Angeles. Prior to her diplomatic service, Ms. Forrester was an associate lecturer at the Queensland University of Technology, where she earned a Bachelor of Social Science and a Master of Public Health.



**Kay Fukunaga,
Director of Hawaii State Affairs, NextEra Energy Hawaii**

Kay Fukunaga is the Director of Hawaii State Affairs for NextEra Energy, a leading provider of clean energy. Ms. Fukunaga's pro bono projects have included assisting with a United Nations exhibit, the Asia-Pacific Economic Cooperation Summit and U.S. bilateral trade relations. She serves on the Board of Governors of the Pacific and Asian Affairs Council, the Investment Board of Punawai 'O Pu'uhonua, a tax credits program aimed at encouraging investment in underprivileged communities especially in the areas of renewable energy and agriculture and the Board of Directors of the Girl Scouts of Hawaii where she will be focused on environmental sustainability initiatives. In 2011, Ms. Fukunaga was selected as a Pacific Century Fellow, Hawaii's version of the White House Fellows Program. Pacific Business News named Ms. Fukunaga one of 40 outstanding business leaders under the age of 40. Ms. Fukunaga holds an MBA from the Harvard Business School and an undergraduate degree in Economics and English with honors from Dartmouth College.



**Ryu Goto,
International Concert Violinist**

Ryu Goto is an accomplished violin soloist. After starting to play at the age of seven, he has performed at New York's Carnegie Hall, Tokyo's Suntory Hall, Washington, DC's Kennedy Center and other venues across Asia, North America and Europe. Mr. Goto has performed with the National Symphony Orchestra, London Philharmonic and Shanghai Symphony Orchestra, among others. His philanthropic activities include work with the "Ryu Goto Excellence in Music Initiative Scholarship" with the New York Department of Education and the African Development Initiative. He is often featured in the media, including on his own Fuji TV Show, "Ryu Goto's Odyssey," a chronicle of his career and personal life from 1996-2006. He holds a black belt under the Japan Karate Association. Mr. Goto holds a B.A. in Physics from Harvard University.



**Gerald Hane, Ph.D.,
President & Chief Executive Officer, Battelle-Japan**

Gerald J. Hane is the President and CEO of Battelle-Japan, a joint venture of Battelle Memorial Institute, the world's largest independent, non-profit research organization, and the Mitsubishi Corporation. His principal mission is to develop innovation-based business partnerships to address emerging market needs in Asia. He currently serves on the U.S.-Japan Innovation and Entrepreneurship Council. Dr. Hane has also held the position of Assistant Director for International Strategy and Affairs at the White House Office of Science and Technology Policy (OSTP), with a concurrent position with the National Security Council. Before entering OSTP, Dr. Hane was a Professional Staff Member of the Committee on Science, Space and Technology of the U.S. House of Representatives. He has B.S. and M.S. degrees in Mechanical Engineering from Stanford University. He received his Ph.D. in Political Economy and Government from Harvard University.





**Harry B. Harris, Jr.,
Assistant to the Chairman of the Joint Chiefs of Staff, United States Navy**



Vice Admiral Harry Harris was born in Japan and raised in Tennessee and Florida. Following graduation from the U.S. Naval Academy in 1978, he was commissioned as a naval flight officer. He has served in every geographic combatant command region. His staff assignments include aide to Commander, U.S. Naval Forces Japan and three tours on the Navy Staff. In 2011, he was assigned as the assistant to the Chairman of the Joint Chiefs of Staff. In this capacity, he serves as the Chairman's direct representative to the Secretary of State. He has logged more than 400 combat hours, in maritime patrol and reconnaissance aircraft. His personal decorations include the Distinguished Service Medal, the Bronze Star and the State Department's Distinguished Honor Award. He is a recipient of the Who's Who in Asian American Communities' Spirit awards. He attended Harvard's Kennedy School of Government, Georgetown's School of Foreign Service and Oxford University.

**Linda A. Hill, Ph.D.,
Wallace Brett Donham Professor of Business Administration,
Harvard Business School**



Linda A. Hill is the Wallace Brett Donham Professor of Business Administration at the Harvard Business School and faculty chair of the Leadership Initiative. She is the author of *Becoming a Manager* and co-author of *Being the Boss: The 3 Imperatives of Becoming a Great Leader*. Professor Hill has a book forthcoming on leading innovation. Hill has authored or co-authored numerous HBR articles, including "Winning the Race for Talent in Emerging Markets." Professor Hill sits on the Boards of Directors of State Street Corporation, Eaton Corporation and Harvard Business Publishing. She is a trustee of the Art Center College of Design and Bridgespan Group. She is a former member of the Board of Trustees of The Rockefeller Foundation. She is on the Advisory Board of the Aspen Institute Business and Society Program.

**Irene Hirano Inouye,
President, U.S.-Japan Council**



Irene Hirano Inouye is President of the U.S.-Japan Council. Through her work at the Council, she also administers the TOMODACHI Initiative, a public-private partnership with the U.S. Embassy in Tokyo that invests in young Japanese and Americans while supporting the recovery of the Tohoku region. She is the former President and founding CEO of the Japanese American National Museum in Los Angeles, a position she held for twenty years. A recipient of bachelor's and master's degrees in Public Administration from the University of Southern California, Ms. Hirano Inouye has extensive experience in non-profit administration, community education and public affairs with culturally diverse communities nationwide. Ms. Hirano Inouye's professional and community activities include serving as Chair and Trustee, Ford Foundation; Trustee and immediate past Chair, Kresge Foundation; Trustee, Washington Center; and Trustee, Independent Sector. She was married to the late U.S. Senator Daniel K. Inouye of Hawaii.

**Mayo Hotta,
Recovery Initiatives Group, CEO Office, SoftBank Corp.**



Mayo Hotta leads the TOMODACHI SoftBank Leadership Program, which invites high school students from the disaster stricken area of Tohoku for the leadership seminar at the University of California, Berkeley. Joining the program were 300 students last year and 100 students this year. Ms. Hotta traveled to the United States as an exchange student at the age of 17. She graduated from the University of California, Santa Barbara in 2004 and joined SoftBank Corporation where she was involved in business planning, investments, incorporation of new companies, stock transfer and setting up companies, etc. After the Great East Japan Earthquake created devastation in the northern region, she became involved in reconstruction efforts on behalf of Softbank Corp.



Lee Howell,

Managing Director, Member of the Managing Board, World Economic Forum

BA in Economics; BA in East Asian Languages and Literature; JD; LLM in International Legal Studies; currently, PhD candidate, University of St Gallen. 1993-96, Fellow, Center for Strategic and International Studies; 1997-99, Deputy Director, Japan Society of New York; 2000, Consultant to UN High Commissioner for Refugees; 2002-03, Senior Policy Adviser, US Agency for International Development. With World Economic Forum: 2001-02, Director, Annual Meeting Programme, New York; 2004-08, Senior Director and Head, Asia; 2009-10, Managing Director responsible for the Annual Meeting in Davos, Annual Meeting of New Champions in China and Summit on the Global Agenda in the UAE; since 2011, Member of the Managing Board with additional responsibilities for the Network of Global Agenda Councils, Global University Leaders Forum and Risk Response Network; also Editor-in-Chief, Global Risks Report. Adjunct Fellow, Pacific Forum, Center for Strategic and International Studies. Member of the Editorial Board, Global Asia



Thomas Iino,

**Chairman of the Board, U.S.-Japan Council,
Chairman of the Board, Pacific Commerce Bank**

Thomas Iino is the Chairman of the Board at Pacific Commerce Bank, the only Japanese American-owned bank in the continental United States, focused on serving the Japanese American community. He also serves as Chairman of the U.S.-Japan Council. Previously, Mr. Iino was Partner-in-Charge at Deloitte & Touche's International Practice in Southern California, a group focused on meeting the local needs of its Japan-based clients. He is the former President of both the National Association of State Boards of Accountancy and the California State Board of Accountancy, receiving "Distinguished Service Awards" from both organizations. Mr. Iino is the past Chairman of the Japanese American Cultural & Community Center, where he remains on the Board. He currently serves on the boards of the Japanese American National Museum and Keiro Retirement Home. He holds a B.S. in Accounting from UCLA, with a California certification as a CPA.



Stephen Kagawa,

Chief Executive Officer, The Pacific Bridge Companies

Stephen Kagawa is passionately focused on helping first generation Americans from Japan and other parts of Asia successfully acclimate financially in their new found American home. Consumed with his vision to understand, appreciate and engage financial advisors from the differing disciplines of insurance, investment, banking, tax and the law from the many areas of the world from which they serve, he is purposefully connecting this collective expertise to better guide multi-national individuals, families and companies through their cross-border realities. In doing so, Stephen and his company, Pacific Bridge, have distinguished themselves internationally as top performers by their peers as well as for companies such as Pacific Guardian Life, ING, American General, Transamerica, Prudential and Pacific Life. You can find him regularly participating in financial industry events, especially on the issues of ethnic diversity marketing and holistic financial advisory.



Yuko Kaifu,

Senior Vice President, Corporate Communications, Union Bank, USA

Yuko Kaifu is Senior Vice President in the Corporate Communications Division of Union Bank. She started her career at the Ministry of Foreign Affairs of Japan. Her past assignments include the Embassy of Japan in Canada, North American Affairs Bureau, Foreign Policy Bureau and Cultural Affairs Department, where she was Deputy Director in Tokyo. During her service at the Ministry, she was appointed official interpreter for Her Majesty the Empress, Prime Minister and Foreign Minister of Japan. After she served as Consul at the Consulate General of Japan in Los Angeles from 2001 to 2007, she left the government to serve as Vice President at the Japanese American National Museum. In 2009, she joined the Corporate Communications team of Union Bank. She serves on the boards of International Visitors Council of Los Angeles and Nisei Week Foundation, and is Executive Vice President of Japan Business Association of Southern California.





Akiko Kato,

Representative of the Tohoku Office, Association for Aid and Relief, Japan

Akiko Kato is the Representative of the Tohoku Office at the Association for Aid and Relief (AAR Japan), an international NGO focused on assisting those affected by armed conflicts, infectious diseases, disabilities, natural disasters and war, and is an organization approved and registered by the United Nations. She joined AAR Japan in 2011 and is in charge of both overseas and domestic operations, including programs in Haiti and Zambia, and emergency assistance and reconstruction projects in the areas affected by the Great East Japan Earthquake. After studying Japanese History focusing on World War II at Meiji University, she completed her Master's degree in Social Development at the University of Sussex in the United Kingdom, followed by a postgraduate specialization program on conflict resolution at the University of Javeriana in the Republic of Colombia.



Darren T. Kimura,

Managing Director, Enerdigm Group, Inc.

Darren Kimura is a technology executive with over 20 years of experience in 23 countries including such major geographies as the USA, Japan and India. His industry experience covers information technology (IT), media, energy efficiency and solar technology. Over his career, he has founded 9 companies, has been inventor on 14 patents and led the acquisition of 65 patents and licenses globally. Through his businesses he has overseen the acquisition of over \$2 billion in contracts, raised over \$80 million in venture capital/private equity and over \$100 million in project financing. He has served in corporate executive positions leading key strategic initiatives such as preparing for an Initial Public Offering, Mergers & Acquisitions for companies and technology, organizing teams, intellectual properties and strategic engagements with Fortune 500 companies. He is currently the Managing Director of Enerdigm Group, a professional investment firm with a focus on early stage venture investing and project finance.



Marc Knapper,

Director, Office of Japanese Affairs,

Bureau of East Asian and Pacific Affairs, U.S. Department of State

Marc Knapper is currently serving as the Director of the Department of State's Office of Japanese Affairs. Prior to this assignment, he was Political Counselor in the U.S. Embassy in Baghdad, Iraq. He has also served as Deputy Chief of the Political Section in the U.S. Embassy in Tokyo and Political Counselor in Hanoi. Previously, he had assignments in the Office for Chinese and Mongolian Affairs in the Department of State, the U.S. Embassy in Seoul (twice) and in Tokyo as the aide to Ambassador Walter Mondale. Mr. Knapper graduated summa cum laude from Princeton University with a B.A. in politics. After graduation, he studied for two years at the University of Tokyo as a visiting graduate research student in international relations on a Monbusho scholarship and worked in the Liberal Democratic Party's International Bureau. He is also a graduate of the Army War College. He speaks Japanese, Korean and Vietnamese.



Mari Kuraishi,

Co-founder & President, GlobalGiving

Mari Kuraishi co-founded GlobalGiving with Dennis Whittle, and currently leads the organization. In 2011, she was named one of Foreign Policy's top 100 Global Thinkers for "crowdsourcing worldsaving." Before GlobalGiving, she worked at the World Bank where she managed and created projects including the first ever Innovation and Development Marketplaces and the first series of strategic forums with the World Bank's president and senior management. Ms. Kuraishi also designed a range of investment projects in the Russia reform program, including a residential energy efficiency project, structural adjustment loans and legal reform project. She currently serves as chair of the board of the Global Business School Network and on the board of Guidestar US. In addition to her native Japanese, Ms. Kuraishi also speaks Russian, Italian, and French. She has a B.A. from Harvard University and did graduate work in Russian and Japanese history and politics at Harvard and Georgetown Universities. Ms. Kuraishi also completed the Advanced Management Program at Harvard Business School.





Yumi M. Kuwana,

Founding Principal, Cook Pine Capital LLC

Yumi M. Kuwana is an entrepreneur and educator with 25 years of experience on Wall Street. She is the President/founder of Cook Pine Solutions LLC, a consulting arm of Cook Pine Capital LLC, which focuses on taking a holistic yet customized and innovative approach to personal and company issues for ultra-high-net-worth global families, including the Remarkable Family Legacy Building Program. Ms. Kuwana is reaching out to a broader community through the creation of the Global Citizens Initiative, an NPO social venture, to provide citizens around the world with the appropriate resources to nurture our next generation of global citizens with longer term vision of establishing a global educational curriculum. Global Citizens Summit for Youth is a reflection of this initiative, a summer program to cultivate a global citizen community, launching the summer of 2014. She received a B.S. from the Wharton School at University of Pennsylvania, and an MBA from Harvard University.



David Leheny, Ph.D.,

Henry Wendt III '55 Professor of East Asian Studies, Princeton University

David Leheny is the Henry Wendt III '55 Professor of East Asian Studies at Princeton University. Trained as a political scientist, he taught in the Department of Political Science at the University of Wisconsin-Madison and served as a research associate in the Institute of Social Science at the University of Tokyo. He served as Regional Affairs Officer in the Office of the Coordinator for Counterterrorism, U.S. Department of State. Most of his diverse research projects involve Japan's reaction to and adoption of international norms, or standards of behavior that have prescriptive and constitutive effects on state action. He is a co-editor of the manuscript, *Inescapable Solutions: Japanese Aid and the Construction of Global Development*. He has received fellowships and awards from the Council on Foreign Relations, Social Science Research Council and Japan Foundation Center for Global Partnership, among others. He is the winner of the Chancellor's Distinguished Teaching Award at the University of Wisconsin-Madison.



Jeffrey A. Miller,

**Director, U.S. Department of Energy Japan Office,
U.S. Embassy Tokyo, U.S. Department of Energy**

Jeffrey Miller is the Energy Attaché at the United States Embassy Japan, and Director of the U.S. Department of Energy (DOE) Japan Office. In this connection, his primary responsibility is to sustain and enhance the bilateral and multilateral energy, security, science, and environmental programs and common interests between DOE and its Government of Japan counterparts. Prior to assuming his current position, Mr. Miller has worked at the United States Departments of Energy and State, as well as for Battelle, at the Pacific Northwest National Laboratory. He attended Muhlenberg College in Allentown, Pennsylvania, majoring in international relations and political science. Following completion of his undergraduate studies, he received a law degree from the University of Maryland School of Law, and is licensed to practice law in the United States, in the District of Columbia and the State of Maryland.



Hideaki Mizukoshi,

Minister and Head of Chancery, Embassy of Japan in the United States of America

Hideaki Mizukoshi is the Head of Chancery at the Embassy of Japan in Washington, DC. He has served in the Foreign Ministry since his graduation from the Faculty of Law of Tokyo University in 1985. He has also served in France and the Republic of Korea. At the Ministry of Foreign Affairs in Tokyo, he has worked as the Director of the First Division of Intelligent and Analysis Services, the Director of the First Southeast Asia Division, the Director for International Peace Cooperation, and the Director for International Counterterrorism Cooperation.





Mike M. Mochizuki, Ph.D.,
Associate Dean for Academic Programs, Elliott School of International Affairs,
The George Washington University



Mike M. Mochizuki is Associate Dean for Academic Programs and holds the Japan-U.S. Relations Chair in Memory of Gaston Sigur at the Elliott School of International Affairs in The George Washington University. Previously he was a Senior Fellow at the Brookings Institution. He was also Co-Director of the Center for Asia-Pacific Policy at RAND and has taught at the University of Southern California and Yale University. His recent books include *China's Military and the U.S.-Japan Alliance in 2030: A Strategic Net Assessment* (co-author, 2013), *The Japan-U.S. Alliance and China-Taiwan Relations: Implications for Okinawa* (co-editor and author, 2008), and *Japan in International Politics: The Foreign Policies of an Adaptive State* (co-editor and author, 2007). He has published articles in such journals as *The American Interest*, *Asia Pacific Review*, *Foreign Affairs*, *International Security*, *Japan Quarterly*, *Journal of Strategic Studies*, *Nonproliferation Review*, *Survival*, and *Washington Quarterly*. He received his Ph.D. in political science from Harvard University.

Nicholas Namba,
Deputy Coordinator for Content Development and Partnerships,
U.S. Department of State



Nicholas Namba is the Deputy Coordinator for Content Development and Partnerships at the Department of State's Bureau of International Information Programs. Mr. Namba leads the Department's public diplomacy efforts to design, develop and curate content and information for policy initiatives and strategic communications programs for key international audiences. Mr. Namba joined the Foreign Service in 2003, and has served as Senior Advisor to the IIP Coordinator; Special Assistant to the Under Secretary for Public Affairs and Public Diplomacy; the human rights officer in Russia; chief of the economic office in Ethiopia; and director of educational and cultural exchanges in India. Prior to joining the Foreign Service, Mr. Namba was a Senior Consultant at CGI, a global provider of consulting and management services. He also worked for the International Monetary Fund and Center for Strategic and International Studies. Mr. Namba has a B.A. in International Affairs from the George Washington University.

Paul Niwa,
Associate Professor, Emerson College



Paul Niwa has launched two international television networks, six newscasts and a streaming media newscast for NBC, CNBC and StockHouse Media, Canada's largest internet company. In 1999, he helped NBC create "Early Today," and in 1996 he launched the award winning "NBC Asia Evening News" in Hong Kong. He produced CNBC's "Today's Business" and the nationally syndicated newscast "This Morning's Business." He's won two Golden Mike awards for radio reporting and documentary. His websites have earned national distinction for innovation, and his broadcast work has been aired on NBC, PBS, NPR and Pacifica. Mr. Niwa created a fellowship for aspiring foreign correspondents. He is a board member of the U.S.-Japan Council, Pacific Citizen newspaper and the AAJA New England Chapter.

Hiromitsu Ogawa,
Founder and Chairman, CAI



Hiromitsu Ogawa is one of the leading Japanese American entrepreneurs in the Silicon Valley. From 1989 to 2006, he served as the chief executive officer of CAI. Prior to starting the company in 1989, he was with Itel Containers International Corp., a lessor of cargo containers for use exclusively in international shipping, for 12 years as vice president of Marketing for Japan/Korea. Earlier in his career, he also held the positions of executive managing director of Heublein Japan Co. Ltd., a food and beverage manufacturing and distribution company, and sales promotion manager with Coca-Cola Japan Co. Ltd. He has been a partner of Quest Venture Partners since 2008. He serves on the Board of the Asian Art Museum in San Francisco and is supportive of many other philanthropic activities. Mr. Ogawa holds a B.A. in Foreign Studies from Kyoto University.



Kelly Ogilvie,

Founder, Chairman, President and Chief Operating Officer, Quemulus, Inc.

Kelly Ogilvie is Founder, Chairman, President and Chief Operating Officer of Quemulus, Inc., an “e-wallet” application accessible from a website and mobile devices. He is also Founding Partner of Social Milli, LLC, a social media consultancy that advises small and medium sized businesses on social media strategy. Prior to founding Quemulus and Social Milli, Mr. Ogilvie was Founder, CEO and President of Blue Marble Biomaterials. He began his career in former Washington State Governor Gary Locke’s office coordinating outreach efforts. Mr. Ogilvie also spent time as Deputy Director for former Mayor of Seattle Greg Nickels and currently serves on the Board of Directors of Extraordinary Futures and the External Advisory Board of Washington State University’s Center for Environmental Research Education and Outreach. He attended Seattle University, where he received a B.A. in Humanities and International Business.



Daniel Okimoto, Ph.D.

Professor Emeritus, Stanford University

Daniel Okimoto is Chairman of the U.S.-Japan Council Board of Councilors. He is Professor Emeritus, Department of Political Science, and Senior Fellow Emeritus at the Freeman Spogli Institute for International Studies, at Stanford University. He co-founded the Shorenstein Asia/Pacific Research Center at Stanford University and developed it into one of the world’s leading centers for research and policy on U.S.-Asia relations. He has been Vice-Chairman of the Japan Committee of the National Research Council at the National Academy of Sciences and a member of the Advisory Council of the Department of Politics at Princeton University. He was awarded the “Order of the Rising Sun with Goldray Neck Ribbon” by the Japanese government and the “Lifetime Achievement Award” by the Keizai Society, U.S.-Japan Business Council of Silicon Valley. Dr. Okimoto earned a B.A. from Princeton University, an M.A. from Harvard University and a Ph.D. in Political Science from the University of Michigan.



Curtiss Takada Rooks, Ph.D.,

Associate Dean of Bellarmine College of Liberal Arts, Loyola Marymount University

Curtiss Takada Rooks is an Associate Dean of Bellarmine College of Liberal Arts, and a faculty member of the Asian Pacific American Studies Program. As Associate Dean, his areas of responsibility include graduate studies, interdisciplinary initiatives, curriculum, assessment, College and community initiatives, strategic planning & implementation, technology and annual budget development. Dr. Rooks is a cultural anthropologist interested in Asian American ethnic community development, ethnic definitions of community health and wellness, race relations and multiracial identity. He is a Member of the U.S.-Japan Council, the Gates Millennium Scholars Program Advisory Council and the Association of Asian American Studies. He was born in Kanagawa Prefecture, Japan to a native Japanese mother and African American father. Their family immigrated to the United States in the 1950s. Dr. Rooks holds an A.B. in Economics & Asian Studies from Dartmouth College, an M.A. in Public Policy from Trinity College and a Ph.D. in Comparative Culture from the University of California, Irvine.



John V. Roos,

Former Ambassador of the United States to Japan

John Victor Roos was the United States Ambassador to Japan from August 2009-August 2013, a pivotal period in U.S.-Japan relations involving two major shifts in government. Following the Great East Japan Earthquake and tsunami, he led the American action in support of Japan’s response to the multi-dimensional and unprecedented disaster. He was awarded the Sue E. Cobb Award for Exemplary Diplomatic Service by the Department of State for his leadership. Ambassador Roos also led the creation of the TOMODACHI Initiative in the wake of the U.S. disaster relief efforts and was recognized with the Special Gold Standard Award for Public Affairs Excellence for this work. Prior to his appointment, he served as Chief Executive Officer and Senior Partner at Wilson, Sonsini, Goodrich, & Rosati, the leading law firm in the United States in the representation of technology, life sciences and emerging growth companies. Ambassador Roos is a graduate of Stanford University and Stanford Law School.





Eiichi Sadamatsu,

Former Trustee, JANIC & Deputy Secretary-General, Save the Children Japan



Eiichi Sadamatsu is the Deputy Secretary-General of Save the Children Japan (SCJ), the Japanese member of Save the Children International, a global child rights movement consisting of 30 national members and active in more than 120 countries around the world. He joined SCJ in as Country Director of SCJ's Nepal Office. He moved to SCJ's Head Office in Tokyo in 2009 to supervise all programs of SCJ including humanitarian relief and development cooperation in Asia, Middle East and Africa as well as post-earthquake relief/recovery programs in the Tohoku region of Japan. Mr. Sadamatsu began his career as a program officer at Japanese Red Cross (JRC). He joined Shapla Neer, one of the leading international NGOs in Japan, and initiated its Nepal Program. He is actively participating in various working groups of The Japan NGO Center for International Cooperation and Japan Platform. He holds a B.A. from Aoyama Gakuin University in Tokyo and an M.Ed. from the University of Manchester.

Joy Sakurai,

First Secretary, U.S. Embassy in Tokyo, U.S. Department of State



Joy Sakurai is a First Secretary in the Public Affairs Section of the U.S. Embassy in Tokyo. Ms. Sakurai joined the Foreign Service in 2003 and has served in Jakarta, Indonesia as Assistant Cultural Affairs Officer, Islamabad, Pakistan as vice-consul and two assignments in Washington, DC. Her prior Japan-related work experience includes two years at the Okinawa Prefectural Government as a JET Program Coordinator for International Relations and as a program assistant at the Embassy of Japan in Washington, DC. Ms. Sakurai was born and raised in Hawaii. Her father is from Tokyo and her mother is a third generation Japanese American with roots in Kyushu. Ms. Sakurai speaks Indonesian, Japanese and French. Her hobbies include swimming, reading, cooking and traveling, and she is married to Timothy Hefner, who is also a diplomat. They have two young children.

George J. Sanchez, Ph.D.,

Vice Dean for Diversity and Strategic Initiatives,

Dornsife College of Letters, Arts & Sciences, University of Southern California



George J. Sanchez is Professor of American Studies & Ethnicity, and History at the University of Southern California, where he also serves as Vice Dean for Diversity and Strategic Initiatives in the Dornsife College of Letters, Arts & Sciences. He is also director of the USC Center for Diversity and Democracy. He is the author of *Becoming Mexican American: Ethnicity, Culture and Identity in Chicano Los Angeles, 1900-1945* (Oxford University Press, 1993), and co-editor of three other books. Professor Sanchez has served as President of the American Studies Association in 2001-02, and as chair of the National Advisory Board of "Imagining America: Artists and Scholars in Public Life" from 2007-2011. He received his B.A. in History and Sociology from Harvard University and his Ph.D. in History in 1989 from Stanford University. He was born in Boyle Heights to two immigrant parents from Mexico and was a first generation college student.

Noriyuki Shiina,

Secretary General, Japan Platform



Noriyuki Shiina is the Secretary General of Japan Platform (JPF), a consortium of 40 Japanese NGOs, businesses, and governmental organizations focused on humanitarian assistance. He joined JPF in October 2007 and organized programs in Iraq and Jordan. He is currently responsible for supervising all JPF programs in Sri Lanka, South Sudan, Haiti, Afghanistan, Myanmar, as well as post-earthquake relief activities in the Tohoku region of Japan. After graduating with a Master degree from University of Bradford in the United Kingdom, Mr. Shiina began his career as a program officer at JEN, a NGO focused on emergency humanitarian assistance. There, he implemented various projects related to emergency relief distribution and shelter creation in India and Afghanistan. In Afghanistan, he served as a liaison analyst for the UN Mine Action Centre, and as a liaison office and project office for reconstruction projects with the UNDP (2004-2007).



Robert F. Smith, Ph.D.,
Vice President, Space and Cyber, Lockheed Martin
Information Systems & Global Solutions (IS&GS) - Defense

Robert (Rob) Smith is Vice President, Space and Cyber in Lockheed Martin IS&GS-Defense. Dr. Smith leads a Line of Business with responsibility for cyber, communications, navigation, weather, responsive space, launch and space superiority, space and nuclear command and control, electronic warfare and missile defense supporting the Department of Defense and international customers. He also leads commercial business in communications, transportation and energy. Dr. Smith is an Eagle Scout and a member of Tau Beta Pi and Phi Kappa Phi. He has multiple patents and received many distinguished awards. He graduated Cum Laude from University of Maryland Baltimore County with a B.S. in Chemical Engineering. He received a Ph.D. in Chemical Engineering from Auburn University and an MBA from Johns Hopkins University.



Steven Rathgeb Smith, Ph.D.,
Executive Director, American Political Science Association

Steven Rathgeb Smith is the executive director of the American Political Science Association. Previously, he was the Louis A. Bantle Professor at the Maxwell School of Citizenship and Public Affairs at Syracuse University and the Nancy Bell Evans Professor of Public Affairs at the Evans School of Public Affairs at the University of Washington where he was also director of the Nancy Bell Evans Center on Nonprofits & Philanthropy. His publications include *Nonprofits for Hire: The Welfare State in the Age of Contracting*, *Governance and Regulation in the Third Sector: International Perspectives* and the forthcoming book, *Nonprofits and Advocacy*. Professor Smith served as President of the Association for Research on Nonprofit Organizations and Voluntary Action (ARNOVA) from 2006-2008. He also served as editor of the Nonprofit and Voluntary Sector Quarterly from 1996-2004. He serves on the board of directors of the International Society for Third Sector Research.



Craig Takiguchi,
Former President, CEO and Co-founder, Muginoho International, Inc.,
parent company of Beard Papa's Sweets Café

Craig Takiguchi has been developing businesses for over 20 years. His passions for building brands have led him to work in business planning and development for top companies including The Walt Disney Company, Sony Pictures Entertainment and PepsiCo. Most recently he has nurtured a nascent dessert company, Beard Papa's Sweets Cafe from Osaka, Japan and transformed it to a global phenomenon, with franchises in over 20 countries. Beyond building businesses, Mr. Takiguchi is active in education reform and public policy. Mr. Takiguchi has worked as Senior Vice President of one of the largest charter school companies in the country and acted as strategic advisor for various publically-traded online universities. He has co-founded a tutoring initiative in New York City funded by Columbia University and he has led the development of a government-subsidized housing development in the Caribbean. Mr. Takiguchi is a graduate of UCLA and Columbia University and resides in Los Angeles, California with his wife and three daughters.



Ayumi Takita,
Program Director, Intellectual Exchange,
Japan Foundation Center for Global Partnership, New York

Ayumi Takita is Program Director of Intellectual Exchange at Japan Foundation Center for Global Partnership (CGP), New York. Her responsibilities center on managing grant programs and fellowships as well as initiating invitation programs that foster people-to-people exchanges between the United States and Japan. Prior to this appointment, she was Head of Arts and Culture Department of the Japan Foundation, Bangkok, where she organized various exchange programs between Japan and Southeast Asia in the field of arts and culture. From 2008 to 2010, as a Senior Officer at CGP Tokyo, she played an active role in organizing several Japanese American Leadership Delegation (JALD) symposia in Tokyo, Fukuoka and Okinawa as well as supporting the JALD reunion conferences in Hawaii and San Francisco. She received an LL.B. from Osaka University, an M.A. from the Osaka School of International Public Policy and completed post-graduate work at the Office of Disarmament Affairs in the United Nations in New York.





**Masaaki Tanaka,
Deputy President, Mitsubishi UFJ Financial Group, Inc.**



Masaaki Tanaka is Representative Director and Deputy President of Mitsubishi UFJ Financial Group, Inc. (MUFG). He has also been a Director of Morgan Stanley since 2011, and currently serves as Vice Chairman of the Board of Councilors of the U.S.-Japan Council. Mr. Tanaka held a variety of positions at Mitsubishi Bank before becoming Executive Officer and General Manager of the Corporate Banking Division in 2004. When the Bank of Tokyo-Mitsubishi UFJ, Ltd. (BTMU) was founded under MUFG, he was appointed Executive Officer and General Manager of the Corporate Planning Division. He was President and CEO of Union Bank, before returning to BTMU. He then became Resident Managing Officer for the United States for MUFG and Senior Managing Executive Officer and CEO for the Americas of BTMU, the positions he held immediately prior to the current position. Mr. Tanaka holds law degrees from the University of Tokyo and the University of Michigan.

**Daniel M. Tani,
Vice President, Orbital Sciences Corporation & Former Astronaut**



Daniel M. Tani is currently an executive with Orbital Sciences Corporation located in Dulles, Virginia. From 1996-2012, he served as an astronaut at the NASA Johnson Space Center in Houston Texas. During his career as an astronaut, he flew on two space missions: STS-108 on Space Shuttle Endeavour in 2001 and as a member of the Expedition 16 crew living on the International Space Station in 2007-2008. He has spent a total of 132 days in space and has completed six career space walks. Prior to joining NASA, Mr. Tani worked at Orbital Sciences, Hughes Aircraft Company (El Segundo, CA), and Bolt Beranek & Newman (Cambridge, MA). He holds a Bachelor's and Master's degree in Mechanical Engineering from the Massachusetts Institute of Technology. He was raised in Lombard, IL outside of Chicago. He is a third generation Japanese-American, and the son of parents that were interned at the Topaz (UT) relocation camp during WWII.

**Delmar Tarrago,
High School Student, Senior Year, School Without Walls**



Delmar Tarrago is a High School Senior at the School Without Walls in Washington, DC. Thanks to his Guatemalan and Mexican family roots, Mr. Tarrago is bilingual and bicultural, and has an interest in language and cultures. He has studied Chinese for the past five years and has won the National Security Language Initiative for Youth (NSLI-Y) Scholarship funded by the United States State Department to study Chinese language and culture in Shanghai for six weeks in the summer of 2012. Mr. Tarrago is participating in the TOMODACHI U.S.-Japan Cultural Exchange Program and will be traveling to Japan for three weeks in November with five other DC Public School students. He plans to further these experiences by pursuing international studies in college.

**Yutaka Tsujinaka, Ph.D.,
Executive Advisor to the President, University of Tsukuba**



Yutaka Tsujinaka is Executive Advisor to the President and Professor at the Faculty of Humanities and Social Sciences at the University of Tsukuba, Japan. Prior to serving as an Executive Advisor to the President, Dr. Tsujinaka was Vice President for International Affairs, Advisor to the President and Chair of the Doctoral Program in International and Advanced Japanese Studies at the Graduate School of Humanities and Social Sciences. He has recently been elected as the President of the Japanese Political Science Association and currently acts as the Director of the Special Project titled "A Comparative and Empirical Study of the Structural Changes in Politics and Transformations in Pressure Groups, Policy Networks, and Civil Society in Japan." He has been conducted comprehensive empirical surveys on 58,000 civil society organizations in 15 countries. Dr. Tsujinaka holds a Doctor of Law degree (Political Science) from Kyoto University, in addition to Master and Bachelor of Law degrees from Osaka University.



**Kenshiro Uki,
General Manager, Sun Noodle New Jersey LLC**

Born in Honolulu, Kenshiro Uki had a dream to travel the world playing soccer. That ambition was cut short when he suffered an injury during a match with college scouts in attendance. After earning his MBA in 2008, he quickly found himself traveling back and forth between Sun Noodle factories in Hawaii and California, perfecting his understanding of the family business as a third generation noodle maker. In 2012, Mr. Uki opened the company's third ramen noodle factory in New Jersey and is currently the General Manager of the facility. His leadership has led to the expansion into new markets in New York, down south to Miami, westward to Chicago, and eastward across the Atlantic Ocean to major cities in Europe. His childhood dream to travel the globe may not happen as a professional soccer player, but it is apparent Mr. Uki will fulfill his dreams through his dedicated hard work as an artisan noodle maker.



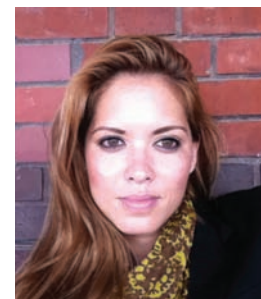
**Kaoru Utada,
Program Manager, TOMODACHI Initiative, U.S.-Japan Council (Japan)**

Kaoru Utada cherishes people-to-people connections, and hopes to foster the "TOMODACHI Generation" through her work developing and managing educational, cultural and leadership programs for the TOMODACHI Initiative. Ms. Utada has a background in the broadcast news industry and has worked in both American and Japanese television networks (ABC News, Fuji TV, and NHK) covering a wide variety of topics related to social, economic, political, and international news. She has been part of the U.S.-Japan Council Emerging Leaders Program since 2009, and was chosen for her work in New York kick-starting and heading up a 501(c)3 nonprofit (HAA Inc.) that acts as a unifying organization for young bilingual bicultural Japanese Americans in the states. Since coming to Japan, she has worked with Stanford University to create a documentary on the educational opportunities in post-3/11, and has helped out with the Tofu Project to bridge Japanese and American social entrepreneurs committed to revitalizing the Tohoku area.



**Ginger Vaughn,
Television Journalist, CCTV**

Ginger Vaughn is a reporter for "Biz Asia America," a business program airing on Beijing's CCTV, an international news channel reaching 120 million viewers in 100 countries. Prior to joining CCTV, Ms. Vaughn was a TV journalist, writer and producer for NHK World. In this role she covered "Green Business" in Japan and Asia including the topics of energy, sustainable living, disaster relief and the environment. From 2008-2011, she served as a media consultant for her own start-up consultancy firm that helped Japanese firms, NPOs, universities and government agencies with international media, reporting and social media. She participated in the JET program as a Japan Ministry of Education Facilitator after graduating from the University of North Carolina. She received her MBA from the Graduate School of Asia Pacific Studies at Waseda University and is currently taking a Ph.D. course at Waseda titled Environmental Governance meets Modern Media.



**Kendee Yamaguchi,
Assistant Director of Local Government and Infrastructure,
Washington State Department of Commerce**

Kendee Yamaguchi serves on the executive management team for the Washington State Department of Commerce. She is the Assistant Director of Local Government and Infrastructure and serves as the Executive Director to both the Community Economic Development Board and the Public Works Board. Yamaguchi works with over 600 units of local government and manages a wide range of programs. Prior to this position, she was as a member of the senior leadership team at the Washington State Office of the Attorney General. Previously, she was a Small Agency Cabinet member for the Governor and a director in the Office of Management and Administration at the White House. She has experience working as a television executive and an attorney in private practice. She is the recipient of awards from the National Asian Pacific American Bar Association and the Access to Justice Institute. Yamaguchi earned a B.A. in political science and public communications from American University and a J.D. from Seattle University.





**Kristi Yamaguchi,
Founder, Always Dream Foundation & Olympic Champion Figure Skater**

Kristi Yamaguchi captured the gold medal in the 1992 Winter Olympics in Albertville, France in figure skating. She is also a world champion and U.S. National Champion. She is a member of the U.S. Figure Skating Hall of Fame, World Figure Skating Hall of Fame and the U.S. Olympic Hall of Fame. Following a long and successful career in professional figure skating, Ms. Yamaguchi took to the dance floor to win top honors with partner Mark Ballas on TV's "Dancing With The Stars." In 1996, she founded the Always Dream Foundation, whose mission is to inspire underserved children to reach for their dreams through innovative reading programs and by advancing the cause of early childhood literacy. Most recently, she has added New York Times Best-Selling author to her list of achievements with her first children's picture book, "Dream Big, Little Pig!", and then following up with "It's A Big World, Little Pig!" Ms. Yamaguchi resides in the San Francisco Bay Area with her husband and their two young daughters.



**Roy Yamaguchi,
Chef & Founder, Roy's**

Born and raised in Tokyo, Roy Yamaguchi moved to the United States to attend the Culinary Institute of America in New York. Mr. Yamaguchi signed on for an apprenticeship in southern California at L'Escoffier, followed by an apprenticeship at L'Ermitage under the late master chef Jean Bertanou. Mr. Yamaguchi worked his way up to chef status with stints at Le Serene and Le Gourmet. In 1984, Chef Roy Yamaguchi opened his first restaurant as an owner, 385 North on Hollywood's La Cienega. This is where the Yamaguchi cooking style, described by Bon Appetit as "California-French-Japanese-eclectic," first came into bloom. In 1988, Mr. Yamaguchi resettled in Hawaii, where he opened his restaurant, "Roy's," of which there are currently 31 establishments worldwide. Mr. Yamaguchi has appeared on "Iron Chef" and "Top Chef Masters," is the author of four cookbooks and has hosted the cooking show "Hawai'i Cooks." He is a recipient of the prestigious James Beard Award.



**Tsunehiko Yanagihara,
Senior Vice President and General Manager,
Washington Office, Mitsubishi Corporation (Americas)**

Tsunehiko Yanagihara is Senior Vice President and General Manager at the Washington Office of Mitsubishi Corporation (Americas), a wholly owned US subsidiary of Mitsubishi Corporation. He has extensive international business experience, having spent more than 25 years in business management positions within the company. Mr. Yanagihara began his career with Mitsubishi Corporation in 1984 in the Machinery Group. In 1996, he moved to the Chemicals Group and became a Managing Director of Europe Precision Molding B.V. in the Netherlands. He returned to Japan in 1999 and served as General Manager at the Life Sciences Business Unit and Bio-Fine Chemicals Unit prior to moving to the Washington, DC office in April 2010. Mr. Yanagihara holds an MBA from Harvard Business School and a B.A. from Amherst College.



**Jan Yanehiro,
Department Chair, School of MultiMedia Communications,
Academy of Art University, San Francisco**

Jan Yanehiro pioneered the magazine format on television as co-host of “Evening Magazine,” a nightly program in San Francisco that ran for 15 years on KPIX TV. Currently she is the Executive Producer of “Pacific Fusion TV” syndicated in the United States, Europe and Asia. She has hosted six documentaries on the redress and relocation issues of Japanese Americans during World War II. Jan has won multiple awards including an Emmy and the Eleanor Roosevelt Humanitarian Award. She is the mother of six, holds seats on several boards including the Kristi Yamaguchi Always Dream Foundation and The Bank of Marin. Her latest book is titled *“This Is Not The Life I Ordered...50 Ways To Keep Your Head Above Water When Life Keeps Dragging You Down.”*



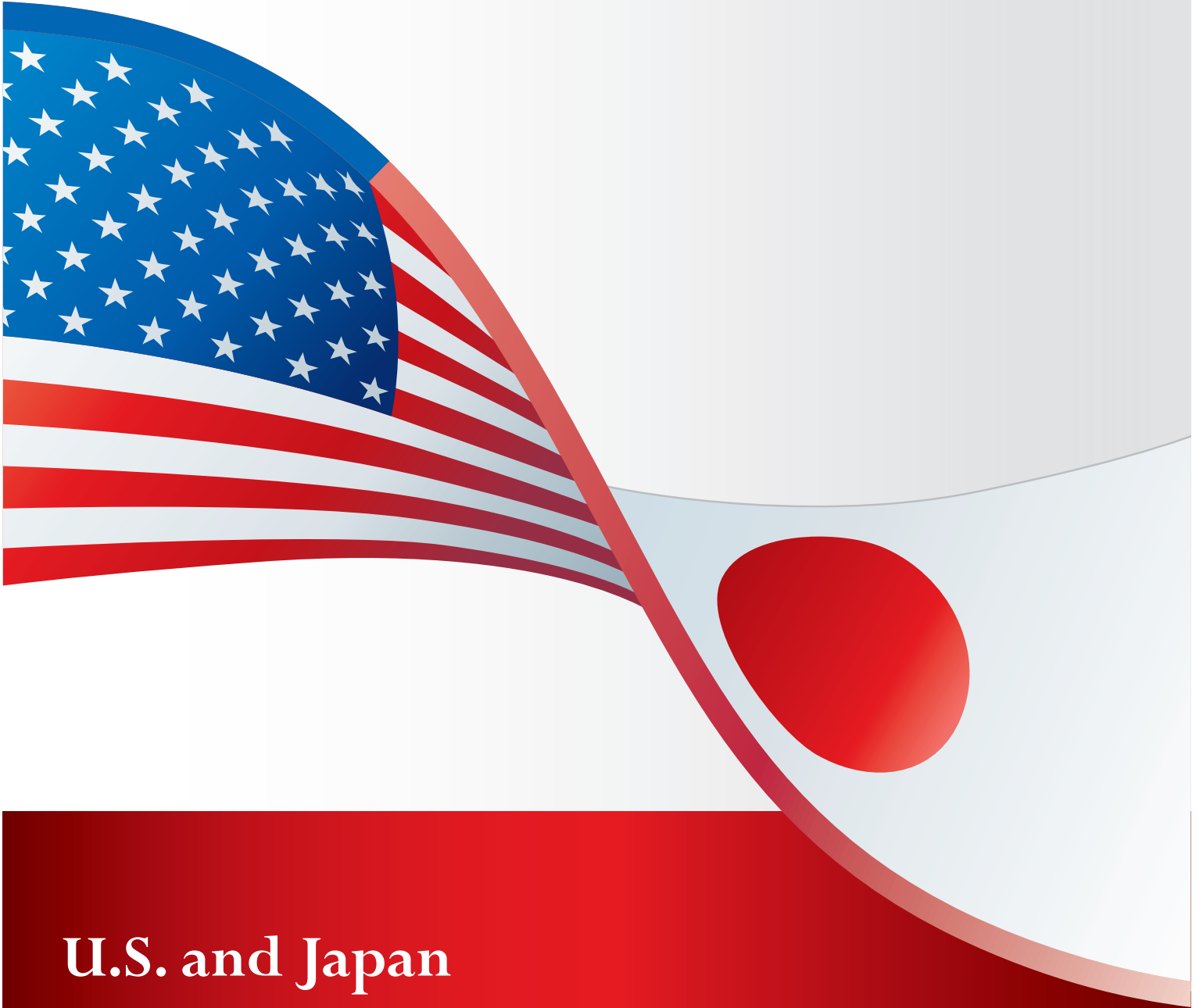
**Eric Ziebold,
Chef & Restaurateur, CityZen**

Eric Ziebold is the Executive Chef at Washington, DC’s Mandarin Oriental. Prior to his current position, Mr. Ziebold had served at Thomas Keller’s The French Laundry and assisted in the opening of Per Se, Thomas Keller’s New York restaurant. Prior to his position with The French Laundry, he was chef de partie of Spago Restaurant, in Los Angeles. Vidalia restaurant was his home base in Washington, DC, where he served from 1994-1995. He continues to receive critical acclaim for CityZen, currently the only AAA Five-Diamond-rated restaurant in the city. In 2008, he took home the prestigious James Beard Award for “Best Chef Mid-Atlantic.” A graduate with honors of the Culinary Institute of America, Mr. Ziebold was part of the class of 1994. However, his affinity for cooking started long before, in his mom’s kitchen growing up in Iowa. He started working in restaurants when he was 16 years old and hasn’t looked back since.





Bank of Tokyo-Mitsubishi UFJ



U.S. and Japan

More than Allies - Friends

BTMU proudly supports the U.S.-Japan Council.





About the TOMODACHI Initiative

What is the TOMODACHI Initiative?



The TOMODACHI Initiative is a public-private partnership, born out of support for Japan's recovery from the Great East Japan Earthquake, that invests in the next generation of Japanese and American leaders through educational and cultural exchanges as well as entrepreneurship and leadership programs.

Led by the U.S.-Japan Council and the U.S. Embassy in Tokyo, TOMODACHI seeks to foster a TOMODACHI generation of young American and Japanese leaders who are committed to and engaged in strengthening U.S.-Japan relations, appreciate each other's countries and cultures and possess the global skills and mindsets needed to contribute to and thrive in a more cooperative, prosperous and secure world.



TOMODACHI Program Alumni to Date: 2,024

The TOMODACHI Initiative supports programs and activities in the following areas:



Educational & Exchange Programs enrich and inspire young Japanese and Americans by providing educational opportunities for students to study abroad as well as gain exposure to each other's countries.



Cultural Programs including Sports, Music, and the Arts provide gateways for Japanese and Americans to learn about and develop enduring interest in each other's cultures.



Entrepreneurship & Leadership Programs help the next generation of entrepreneurs and young leaders get access to skills and expertise that will guide them towards success.



For more information, visit www.usjapantomodachi.org



About the Emerging Leaders Program

2013 TOMODACHI Emerging Leaders Program

Since its inaugural class in 2010, the Emerging Leaders Program has helped educate and encourage dozens of next generation leaders. Japanese Americans from across the country come to meet with their fellow young professionals at the U.S.-Japan Council Annual Conference and Members Meeting. Once there, these Emerging Leaders are given the opportunity to interact with senior leaders in the private, government and civil sectors and are encouraged to pursue further activities that promote strong and positive U.S.-Japan relations. The program has built a diverse group of successful alumni who think globally, assume greater leadership roles in society and are enthusiastic about sustaining a strong partnership between the United States and Japan.

Emerging Leaders Program participants also join the TOMODACHI Generation, a wide group of young people in the U.S. and Japan committed to building and strengthening the friendship between our two countries. The TOMODACHI Emerging Leaders Program is just one of dozens of programs working to grow the TOMODACHI Generation and is part of TOMODACHI's efforts in Entrepreneurship and Leadership Development. Through these programs, participants develop leadership skills that can be used throughout their lives, regardless of their profession. They learn to work and thrive in an entrepreneurial environment, creating new ideas and enterprises that spur economic growth and social progress.

We are proud to welcome the 2013 TOMODACHI Emerging Leaders:

Ms. Amy Ancona – Schaumburg, IL
*Literacy Instructional Coach,
Schaumburg School District 54*

Mr. Nate Gytoku – Honolulu, Hawaii
Air Reps Hawaii Manager, Heide & Cook LLC

Ms. Allison Ikeda – Washington, DC
*Medical Student, George Washington University
School of Medicine and Health Sciences*

Mr. Craig Ishii – Los Angeles, CA
Executive Director, Kizuna

Ms. Yuki Lin – San Francisco, CA
*Economic Affairs Assistant,
Consulate General of Japan in San Francisco*

Ms. Kay Makishi – Fukuoka, Japan
*Chair, Association for Japan Exchange and Teaching
& Coordinator for International Relations, JET Programme*

Ms. Aki Marceau – Honolulu, Hawaii
*Transportation Planner,
Parsons Brinckerhoff/Honolulu Rail Transit Project*

Mr. Brandon Mita – Chicago, IL
Labor & Employment Attorney, Littler Mendelson, PC

Mr. Adam Moriwaki – New York, NY
*Commercial Real Estate Debt Trading Desk Strategist,
Morgan Stanley*

Lt. Jaden Risner – San Diego, CA
United States Navy

Ms. Courtney Sato – New Haven, CT
Ph.D. Student, Yale University

Mr. Yuuki Shinomiya – Washington, DC
Executive Director, International Student Conferences



Proud Supporters of the U.S.-Japan Council



www.itoen.com

お茶といったら伊藤園



The Tsuha Foundation is proud to support the
U.S.-Japan Council for the 2013 Annual Conference
and the Emerging Leaders Program



TSUHA FOUNDATION



2013 Annual Conference Sponsors

PLATINUM SPONSOR

American Airlines



TITLE SPONSORS



Bank of Tokyo-Mitsubishi UFJ



FAST RETAILING

LOCKHEED MARTIN



Prudential

Bring Your Challenges®

SIGNATURE SPONSORS

HITACHI
Inspire the Next



 **Mitsubishi Corporation**

Hiromitsu & Betty Ogawa



TSUHA FOUNDATION



PREMIER SPONSORS



株式会社 青山財産ネットワークス
Aoyama Zaisan Networks Company, Limited

ARNOLD & PORTER LLP



Deloitte.



Ernest M. Higa



NOMURA



Takeda Pharmaceutical Company Limited



TOYOTA



GOLD SPONSORS



Thomas Iino

JPMORGAN CHASE & CO.



Henry Y. Ota



東京海上日動



Board of Directors and Board of Councilors

EXECUTIVE COMMITTEE

Thomas Iino, *Chairman*
Chairman, Pacific Commerce Bank

Irene Hirano Inouye, *President*

Henry Y. Ota, *Vice-Chairman*
Attorney at Law

Colbert M. Matsumoto, *Vice-Chairman*
Chairman & CEO, Island Insurance Co., Ltd.

Michael Hirai, *Treasurer*
President & Chief Investment Officer, Bishop
Street Capital Management/ Senior Vice President
& Manager, Institutional Wealth Management
Division,
First Hawaiian Bank

Susan J. Onuma, *Secretary*
Partner, Japan Practice, Kelley Drye Warren LLP

BOARD MEMBERS

Phyllis Campbell
Chairman, JP Morgan Chase & Co.,
Pacific Northwest

Royanne K. Doi
Corporate Chief Ethics Officer, Prudential
Financial Inc. – Japan Representative Office

Tracey Doi
Group Vice President & Chief Financial Officer,
Toyota Motor Sales, USA, Inc.

Sho Dozono
President & CEO, Azumano Travel Service

Ernest M. Higa
Chairman & CEO, Higa Industries Co., Ltd.;
Wendy's Japan LLC; K.K. Higa Investments &
Director, JC Comsa Corporation

Robert K. Ichikawa
Partner, Kobayashi, Sugita & Goda

Frederick H. Katayama
Anchor, Reuters Insider,
Thomson Reuters

Dayne Kono
Principal, Masuda, Funai, Eifert & Mitchell, Ltd.

Moni Miyashita
Senior Advisor, McKinsey & Co.

Susan Morita
Partner, Arnold & Porter, LLP

Gary S. Moriwaki
Partner, Fox Rothschild, LLP

Paul N. Iwa
Professor of Journalism, Emerson College

Allen M. Okamoto
Owner — Broker
T. Okamoto & Co.

Wallace K. Tsuha
President, The Tsuha Foundation

Jan Yanehiro
Department Chair, School of Multi Media
Communications, Academy Art University,
San Francisco

Paul Yonamine
General Manager and Executive Officer,
IBM Japan, Ltd.



BOARD OF COUNCILORS

Chairman

Daniel Okimoto, Ph.D.

*Director-Emeritus, Shorenstein APARC;
FSI Senior Fellow and Professor Emeritus
of Political Science, Stanford University,
Stanford, CA*

Vice Chairman

Honorable Norman Y. Mineta

*President & CEO, Mineta & Associates,
LLC; Former Secretary of Transportation,
U.S. Department of Transportation; Former
Secretary of Commerce, U.S. Department of
Commerce, Washington, DC*

Vice Chairman

Masaaki Tanaka

*Deputy President, Mitsubishi UFJ
Financial Group, Inc., Tokyo, Japan*

BOARD MEMBERS

Naoyuki Agawa

*Vice-President, International Collaboration,
Keio University, Kanagawa, Japan*

Honorable George Ariyoshi

*Former Governor, State of Hawai'i,
Honolulu, Hawaii*

Gerald Curtis

*Burgess Professor of Political Science,
Columbia University, New York, NY*

Glen S. Fukushima

*Senior Fellow, Center for American
Progress, Washington, DC*

Soichiro Fukutake

*Director and Chairman,
Benesse Holdings, Inc., Tokyo, Japan*

Honorable Colleen Hanabusa

*United States House of Representatives,
State of Hawai'i, Honolulu, Hawaii*

Yasuchika Hasegawa

*President & CEO, Takeda Pharmaceutical
Company Ltd., Tokyo, Japan*

Honorable Mazie Hirono

*United States Senate, State of Hawai'i,
Honolulu, Hawaii*

Thomas W. Horton

*Chairman & CEO,
AMR Corporation and American Airlines,
Fort Worth, TX*

His Excellency Ryoza Kato

*Former Ambassador Extraordinary and
Plenipotentiary of Japan to the U.S.,
Tokyo, Japan*

Takashi Kawamura

Chairman, Hitachi, Ltd., Tokyo, Japan

Hiroko Kuniya

*Anchor and Presenter, Today's Close-Up,
NHK (Japan Broadcasting Corporation),
Tokyo, Japan*

Honorable Doris Matsui

*United States House of Representatives,
State of California, Sacramento, CA*

Takeshi Niinami

*President & CEO, Lawson, Inc.,
Tokyo, Japan*

Hiromitsu Ogawa

*Chairman, CAI International,
San Francisco, CA*

John Onoda

*Senior Consultant, Fleishman-Hillard
International Communications, Moraga, CA*

His Excellency Motoatsu Sakurai

*President, Japan Society;
Former Ambassador and Consul General of
Japan in New York, New York, NY*

Honorable John Thomas Schieffer

*Former Ambassador Extraordinary and
Plenipotentiary of the U.S. to Japan,
Fort Worth, Texas*

George Takei

*Actor, Hosato Enterprise, Inc.,
Los Angeles, CA*

Dennis Teranishi

*Chair & CEO, Pacific International Center
for High Technology Research (PICHTR),
Honolulu, Hawaii*

Paul Terasaki, Ph.D.

*Chairman, Terasaki Foundation,
Los Angeles, CA*

Roy Yamaguchi

*Chef and Restaurateur, Roy's,
Honolulu, Hawaii*

Kristi Yamaguchi

*Founder, Always Dream Foundation &
Olympic Champion Figure Skater
Alamo, CA*

HONORARY BOARD OF COUNCILORS

Honorable Howard Baker

*Former Ambassador Extraordinary and
Plenipotentiary of the U.S. to Japan,
Huntsville, TN*

Honorable Thomas S. Foley

*Former Ambassador Extraordinary and
Plenipotentiary of the U.S. to Japan,
Washington, DC*

Honorable James Hodgson

*Former Ambassador Extraordinary and
Plenipotentiary of the U.S. to Japan,
Malibu, CA*

Honorable Yohei Kono

*Former Speaker of the House of
Representatives of Japan, Tokyo, Japan*

Honorable Walter Mondale

*Former Vice President of the United States;
Former Ambassador Extraordinary and
Plenipotentiary of the U.S. to Japan,
Minneapolis, MN*

His Excellency Yoshio Okawara

*Special Adviser, Institute for International
Policy Studies; Former Ambassador
Extraordinary and Plenipotentiary of Japan
to the U.S., Tokyo, Japan*

His Excellency Kunihiko Saito

*Former Ambassador Extraordinary and
Plenipotentiary of Japan to the U.S.,
Tokyo, Japan*

Katsuhiko Shirai, D.Eng.

*Former President, Waseda University,
Tokyo, Japan*

His Excellency Shunji Yanai

*President and Judge, International Tribunal
for the Law of the Sea; Former Ambassador
Extraordinary and Plenipotentiary of Japan
to the U.S., Tokyo, Japan*



Special Thanks

U.S.-Japan Council Board of Directors and Board of Councilors

U.S.-Japan Council Members, Associate Members and Friends of the Council

U.S.-Japan Council Staff

Washington, DC Office

Irene Hirano Inouye, President

Suzanna Basalla, Executive Vice President

Ler Lee Tan, Finance and Administrative Manager

Saki Takasu, Development Director

Shane Graves, Program Manager

Mya Fisher, Program Manager

Shiori Okazaki, Communications Manager

Tim White, Media Specialist and Operational Support

Yuri Maruyama, Executive Assistant and Office Coordinator

Nicola Howell-Graham, Part-time Accountant

Los Angeles, CA Office

Hiroyo Nonoyama, Director, U.S. and Japan Programs

Allison Murata, Program & Membership Specialist

San Francisco, CA

Kaz Maniwa, Senior Vice President

Tokyo, Japan Office

Laura Winthrop Abbot, Executive Director, TOMODACHI Initiative

Miori Oka, Program Manager, TOMODACHI Initiative

Kanako Morimoto, Marketing Specialist, TOMODACHI Initiative

Kaoru Utada, Program Manager, TOMODACHI Initiative

Andrea Miller, Marketing and Communications Coordinator, TOMODACHI Initiative

Setsuko Stanley, Administrative Manager, TOMODACHI Initiative

Alexia D'Arco, Program Development Consultant, TOMODACHI Initiative

Annual Conference Volunteers & Special Support

Angela Aranda

Anna Cable

Georgette Furukawa-Martinez

Nora Scullin

Volunteers from the Washington, DC region

Cover and Interior Design: Ms. Yuri Maruyama



In the last year, the U.S.-Japan Council lost several dear friends. Please join us in remembering four influential leaders of the Japanese American community who promoted strong U.S.-Japan relations.



Senator Daniel K. Inouye

September 7, 1924 – December 17, 2012

With the passing of Senator Daniel K. Inouye, the U.S.-Japan relationship lost one of its greatest champions of the last 50 years. Senator Inouye was a Medal of Honor Recipient for his actions in World War II and went on to represent the state of Hawaii for more than 50 years in Congress. He was the first Representative of Japanese descent and, as Senate President Pro Tempore, became the highest-ranking Asian American public servant in U.S. history. Senator Inouye was just the seventh American awarded a Grand Cordon of the Order of the Paulownia Flowers by the Japanese Government. He was posthumously awarded the Presidential Medal of Freedom by a fellow Hawaiian, President Barack Obama. An inspiration to Japanese Americans across the country, Senator Inouye was instrumental in the founding of the U.S.-Japan Council and was a featured speaker at events including the inaugural USJC Annual Conference in 2010. He was also dedicated to legislative exchange between Members of Congress and the Japanese Diet.



Mr. George Aratani

May 22, 1917 – February 19, 2013

George Aratani was well known for successfully launching post-World War II international trade enterprises including Mikasa Inc. and Kenwood, but is also known for his philanthropic contributions. The year Mikasa, Inc. went public on the New York Stock Exchange in 1994, Aratani and his wife Sakaye launched the Aratani Foundation. The foundation has supported dozens of Japanese American organizations and programs including the Japanese American National Museum and the Japanese American Cultural and Community Center. At the University of California Los Angeles, the Aratanis endowed the United States' first academic chair to study Japanese American internment and their efforts to gain redress. Mr. Aratani was an early supporter of USJC and served on the U.S.-Japan Council Board of Councilors. The Aratani Foundation made a generous contribution to the U.S.-Japan Council Earthquake Relief Fund, sending much-needed aid to Japanese non-profit organizations working to alleviate the hardships of the Great East Japan Earthquake and Tsunami.



Mr. Kip Tokuda

October 8, 1946 – July 13, 2013

Kip Tokuda, an alumnus of the 2003 Japanese American Leadership Delegation, was a member of the USJC Seattle Host Committee, helping the Council make its first appearance in the Pacific Northwest at the 2012 Annual Conference. Among many achievements, the former state representative of Washington helped found the Japanese Cultural & Community Center of Washington. In 2012, he received the Order of the Rising Sun from the Japanese government in recognition of his contributions to the U.S.-Japan relationship.



Ms. Lillian Kawasaki

September 17, 1950 – July 18, 2013

U.S.-Japan Council Member Lillian Kawasaki was a member of the 2004 Japanese American Leadership Delegation and had been active in the Council's Clean Tech Working Group. Following a barrier-breaking, 36-year career with the City of Los Angeles, she had served as the Director of the Water Replenishment District of Southern California elected in 2006. She was a co-founder of Friends of Manzanar and was committed to preserving the site in memory of her mother's internment during World War II.

The U.S.-Japan Council bids a fond aloha to the friends and supporters we've lost and will remember their many enduring contributions.

A decorative background featuring a series of horizontal lines. On the left side, there is a large blue triangle pointing downwards. On the right side, there is a large gray triangle pointing upwards. The background is white with light gray horizontal lines.



Notes

The world is waiting.

Wherever in the world you wish to explore,
we can help take you there. We're bringing
you more destinations to make the world
feel smaller so you can dream bigger.

